

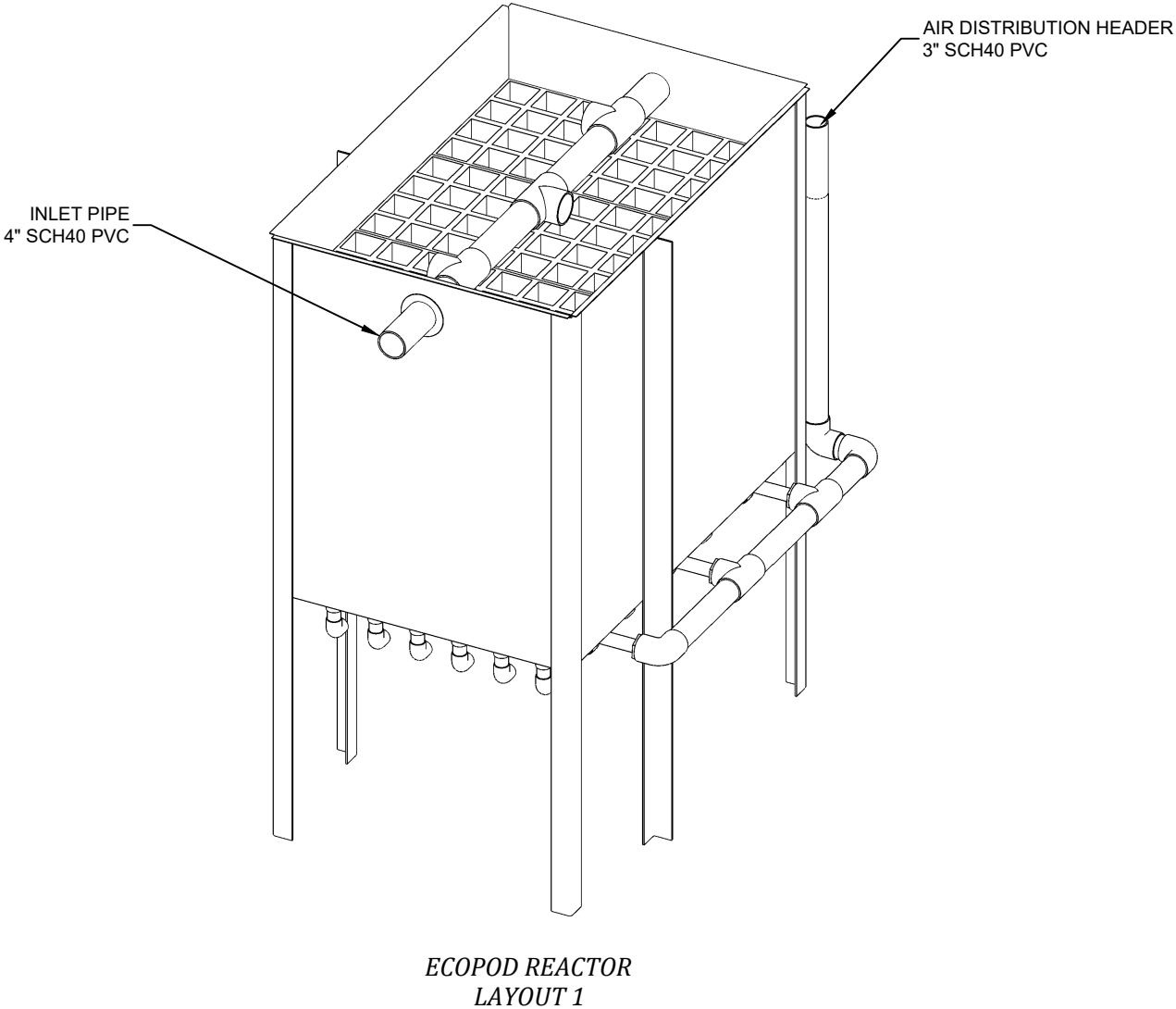
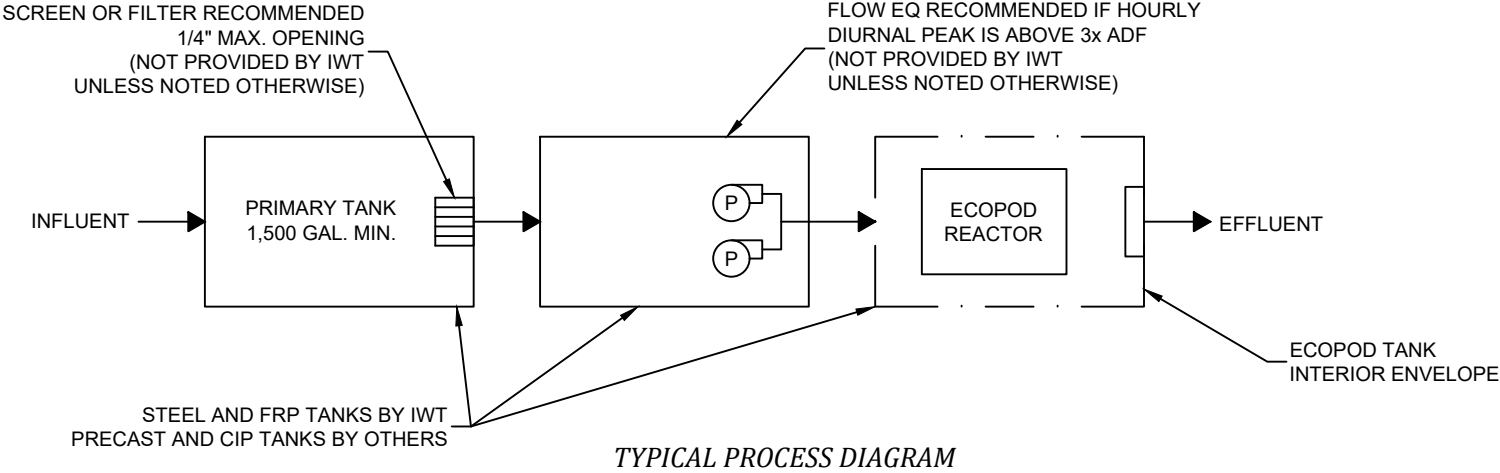
- GENERAL NOTES
- THE DRAWINGS DEPICTED HEREIN REPRESENT PRELIMINARY LAYOUTS OF A WASTEWATER TREATMENT SYSTEM CAPABLE OF TREATING THE DOMESTIC WASTE CONSTITUENTS NOTED IN TABLE 1.
 - ECOPOD REACTOR BOX SHALL BE CONSTRUCTED OF AISI 304/304L STAINLESS STEEL.
 - TANK MATERIAL OPTIONS:
 - CARBON STEEL PER ASTM A36 w/COATING PER IWT STANDARDS.
 - FIBERGLASS REINFORCED PLASTIC (FRP) (NOT ALL MODELS).
 - PRECAST CONCRETE PER ENGINEER OF RECORD REQUIREMENTS, BY OTHERS.
 - CAST-IN-PLACE CONCRETE PER ENGINEER OF RECORD REQUIREMENTS, BY OTHERS.
 - BLOWERS, WEIRS, CONTROL PANELS, AND VARIOUS SMALL PARTS WILL BE SHIPPED UNASSEMBLED AND SECURELY PACKAGED, TO BE INSTALLED BY CONTRACTOR.
 - SEE INSTALLATION GUIDE FOR INSTALLATION DETAILS.
 - CONTACT AN IWT REPRESENTATIVE REGARDING DEVIATIONS FROM THESE STANDARDS.

| TABLE 1 PROCESS PARAMETERS IWT E300D BOD ONLY | | |
|---|-----------|---------------|
| PARAMETER | MINIMUM | MAXIMUM |
| AVERAGE DAILY FLOW | - | 3,000 GPD |
| PEAK DAILY FLOW | - | 4,500 GPD |
| INFLUENT BOD ₅ | - | 7.5 LB/DAY |
| AIR TEMPERATURE | - | 115 °F |
| WATER TEMPERATURE | 68 °F | 68 °F |
| RELATIVE HUMIDITY | 10% | 90% |
| SITE ELEVATION | 0 FT AMSL | 3,000 FT AMSL |

| TABLE 2 AIR DEMAND | | |
|-----------------------------------|--|--|
| PARAMETER | UP TO 1,000 FT AMSL | 1,000 TO 3,000 FT AMSL |
| STANDARD AIRFLOW | 36 SCFM | 42 SCFM |
| SITE AIR REQUIREMENT | 41 ICFM | 51 ICFM |
| BLOWER INLET AIR | 51 ICFM | 51 ICFM |
| AIR HEADER SIZE | 3 IN | 3 IN |
| MIN. TANK VENT X-SECT. AREA | 21 IN ² 2 EA 4" OR 1 EA 6" | 21 IN ² 2 EA 4" OR 1 EA 6" |
| BLOWER SELECTION | FPZ SCL R30-MD | FPZ SCL R30-MD |
| NOISE LEVEL | 72.2 dB(A) | 72.2 dB(A) |
| AIR TEMPERATURE RISE ¹ | 29 F (16.1 C) | 29 F (16.1 C) |
| BLOWER INLET DIAMETER | 1.25 IN NPT | 1.25 IN NPT |
| BLOWER OUTLET DIAMETER | 1.25 IN NPT | 1.25 IN NPT |
| MOTOR POWER RATING ² | 2 HP | 2 HP |
| OPERATING POWER | 0.92 KW | 0.92 KW |

1. REVIEW BLOWER DISCHARGE AIR TEMPERATURE WHEN SPECIFYING AIR MAIN PIPING MATERIAL.

2. REVIEW BLOWER MANUFACTURER CUTSHEETS FOR ADDITIONAL ELECTRICAL INFORMATION.



| TABLE 3 STANDARD EQUIPMENT LIST | | | |
|------------------------------------|-----|------|-------------|
| DESCRIPTION | QTY | MAKE | MODEL |
| ECOPOD REACTOR | 1 | IWT | E300D |
| BLOWER | 1 | FPZ | PER TABLE 2 |
| CONTROL PANEL | 1 | IWT | PER DESIGN |
| 24" S.S. EFFLUENT WEIR | 1 | IWT | TROUGH-3.0 |

| NO. | DATE | INITIALS | DESCRIPTION |
|-----|----------|----------|----------------------|
| A | 10/12/21 | AOB | ADDED TRIMETRIC VIEW |
| | | | |
| | | | |
| | | | |
| | | | |
| | | | |
| | | | |
| | | | |
| | | | |
| | | | |



INFILTRATOR WATER TECHNOLOGIES, LLC
4 BUSINESS PARK RD, OLD SAYBROOK, CT 06475
WWW.INFILTRATORWATER.COM
PHONE: (800) 221-4436 / EMAIL: INFO@INFILTRATORWATER.COM

COPYRIGHT (C) 2024 INFILTRATOR WATER TECHNOLOGIES, LLC (IWT). INFORMATION CONTAINED HEREIN IS CONFIDENTIAL AND IS THE PROPERTY OF IWT. NO PART OF THIS DRAWING SHALL BE REPRODUCED, DISTRIBUTED, DISCLOSED, OR USED BY ANY PERSON OR ORGANIZATION, IN WHOLE OR IN PART, WITHOUT THE PRIOR WRITTEN PERMISSION OF IWT. THIS INFORMATION IS BASED ON SPECIFIC INPUT PARAMETERS AND IS FOR BUDGETARY OR PRELIMINARY USE ONLY. USE AND INTERPRETATION OF THIS INFORMATION AND DETERMINING THE APPLICABILITY TO A SPECIFIC PROJECT IS AT THE SOLE DISCRETION OF THE USER AND/OR THE ENGINEER OF RECORD.

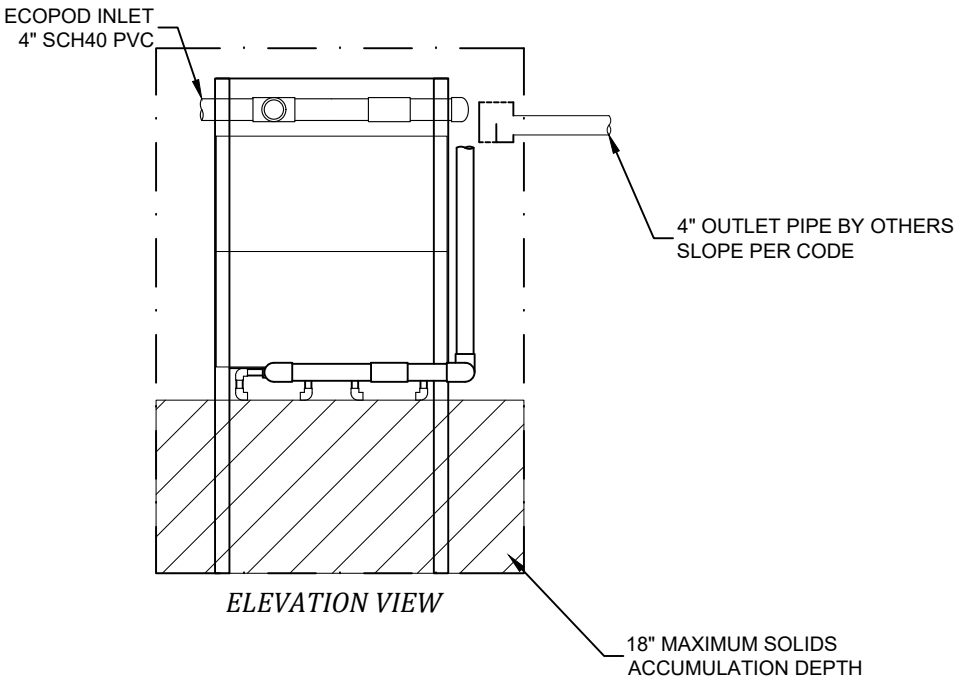
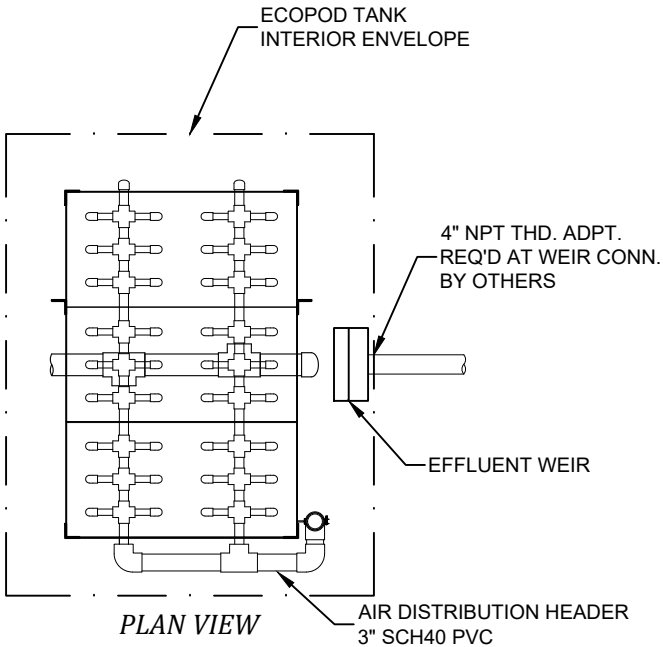
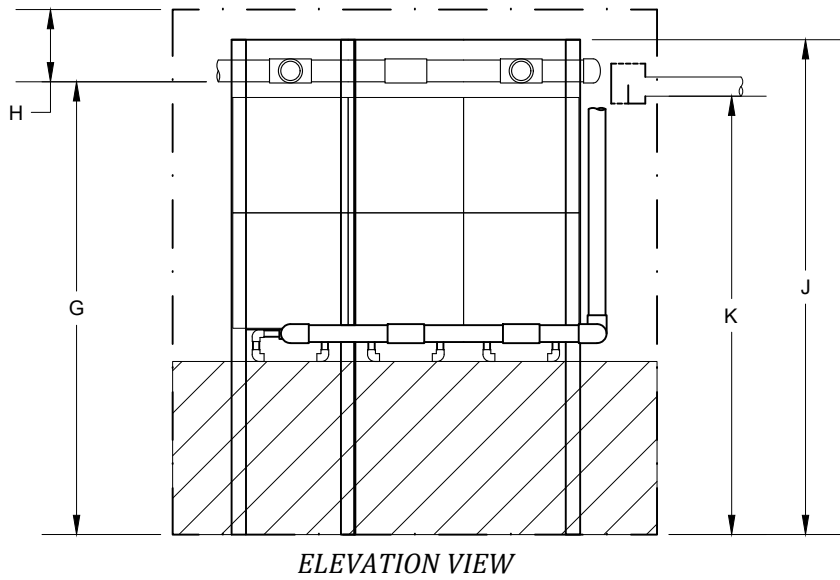
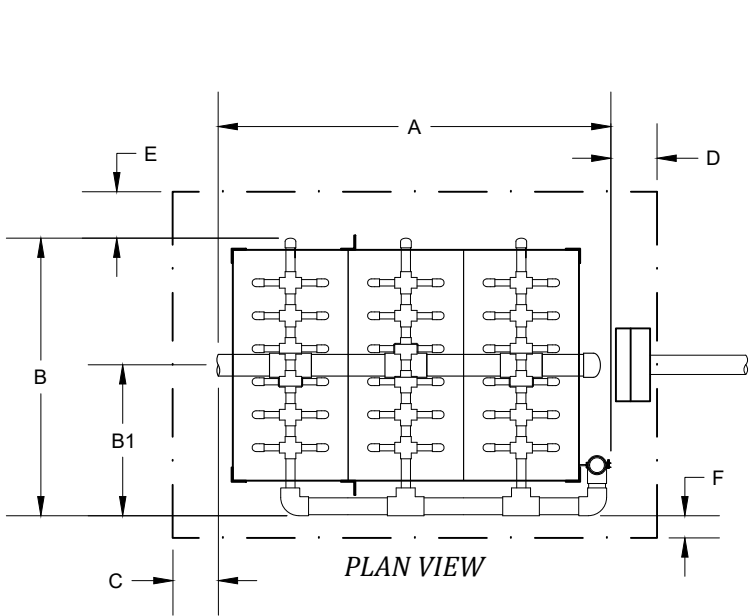
ECOPOD E300D
STANDARD DESIGN FOR BOD REDUCTION

GENERAL ARRANGEMENT
DESIGN OVERVIEW

| | |
|---------------------|-----------------------|
| HORIZ. SCALE N/A | PROJECT NO. N/A |
| VERT. SCALE N/A | DATE 02/11/2021 |
| DRAWN BY CGK | DESIGNED BY AOB |
| DRAWING NO. C1.0 | SHEET NO. 01 of 02 |

- GENERAL NOTES
1. ECOPOD REACTOR BOX SHALL BE CONSTRUCTED OF AISI 304/304L STAINLESS STEEL.
 2. TANK MATERIAL OPTIONS:
 - 2.1. CARBON STEEL PER ASTM A36 w/COATING PER IWT STANDARDS.
 - 2.2. FIBERGLASS REINFORCED PLASTIC (FRP) (NOT ALL MODELS).
 - 2.3. PRECAST CONCRETE PER ENGINEER OF RECORD REQUIREMENTS, BY OTHERS.
 - 2.4. CAST-IN-PLACE CONCRETE PER ENGINEER OF RECORD REQUIREMENTS, BY OTHERS.
 3. SEE INSTALLATION GUIDE FOR INSTALLATION DETAILS.
 4. CONTACT AN IWT REPRESENTATIVE REGARDING DEVIATIONS FROM THESE STANDARDS.

| TABLE 4 MINIMUM ECOPOD REACTOR DIMENSIONS | | | | | | | | | | |
|---|-------|-----------|----------------|-----|------------------|-----|-----------------|-----|----------------------|-----|
| SITE ELEVATION | | LAYOUT ID | REACTOR WEIGHT | | A OVERALL LENGTH | | B OVERALL WIDTH | | B1 AIR HEADER CL DIM | |
| FT | M | | LB | KG | IN | CM | IN | CM | IN | CM |
| 0-3,000 | 0-914 | 1 | 950 | 431 | 82 | 209 | 59 | 150 | 32 | 82 |
| 0-3,000 | 0-914 | 2 | 880 | 400 | 58 | 148 | 83 | 211 | 44 | 112 |
| 1. SOME REACTOR LAYOUTS NOT AVAILABLE IN FIBERGLASS TANKS. CONTACT AN IWT REPRESENTATIVE FOR DETAILS. | | | | | | | | | | |



| TABLE 5 RECOMMENDED ECOPOD TANK INTERIOR ENVELOPE DIMENSIONS | | |
|--|----|----|
| DIMENSION | IN | CM |
| C VESSEL FRONT SPACE | 12 | 30 |
| D VESSEL REAR SPACE | 18 | 46 |
| E AIR HEADER SIDE INSIDE SPACE | 6 | 15 |
| F NO HEADER SIDE INSIDE SPACE | 6 | 15 |

| TABLE 6 REQUIRED ECOPOD TANK INTERIOR ENVELOPE MINIMUM DIMENSIONS | | |
|---|-----|-----|
| DIMENSION | IN | CM |
| G INLET INVERT | 92 | 234 |
| H PLENUM SPACE ABOVE INLET INVERT | 10 | 25 |
| J MEDIA REACTOR HEIGHT | 101 | 257 |
| K OUTLET INVERT | 89 | 226 |
| 1. ONE (1 EA.) INLET AND ONE (1 EA.) OUTLET ACCESS HATCH REQUIRED, 24" DIA MINIMUM. | | |

| NO. | DATE | INITIALS | DESCRIPTION |
|-----|----------|----------|--------------------|
| A | 05/17/21 | AOB | CREATED NEW LAYOUT |
| | | | |
| | | | |
| | | | |
| | | | |
| | | | |
| | | | |
| | | | |
| | | | |
| | | | |



INTEGRATOR WATER TECHNOLOGIES, LLC
4 BUSINESS PARK RD, OLD SAYBROOK, CT 06475
WWW.INTEGRATORWATER.COM
PHONE: (800) 221-4436 / EMAIL: INFO@INTEGRATORWATER.COM

COPYRIGHT (C) 2024 INTEGRATOR WATER TECHNOLOGIES, LLC (IWT). INFORMATION CONTAINED HEREIN IS CONFIDENTIAL AND IS THE PROPERTY OF IWT. NO PART OF THIS DRAWING SHALL BE REPRODUCED, DISTRIBUTED, DISCLOSED, OR USED BY ANY PERSON OR ORGANIZATION, IN WHOLE OR IN PART, WITHOUT THE PRIOR WRITTEN PERMISSION OF IWT. THIS INFORMATION IS BASED ON SPECIFIC INPUT PARAMETERS AND IS FOR BUDGETARY OR PRELIMINARY USE ONLY. USE AND INTERPRETATION OF THIS INFORMATION AND DETERMINING THE APPLICABILITY TO A SPECIFIC PROJECT IS AT THE SOLE DISCRETION OF THE USER AND/OR THE ENGINEER OF RECORD.

ECOPOD E300D
STANDARD DESIGN FOR BOD REDUCTION

GENERAL ARRANGEMENT
LAYOUT DIMENSIONS

| | |
|---------------------|-----------------------|
| HORIZ. SCALE N/A | PROJECT NO. N/A |
| VERT. SCALE N/A | DATE 05/17/2021 |
| DRAWN BY CGK | DESIGNED BY AOB |
| DRAWING NO. C1.1 | SHEET NO. 02 of 02 |