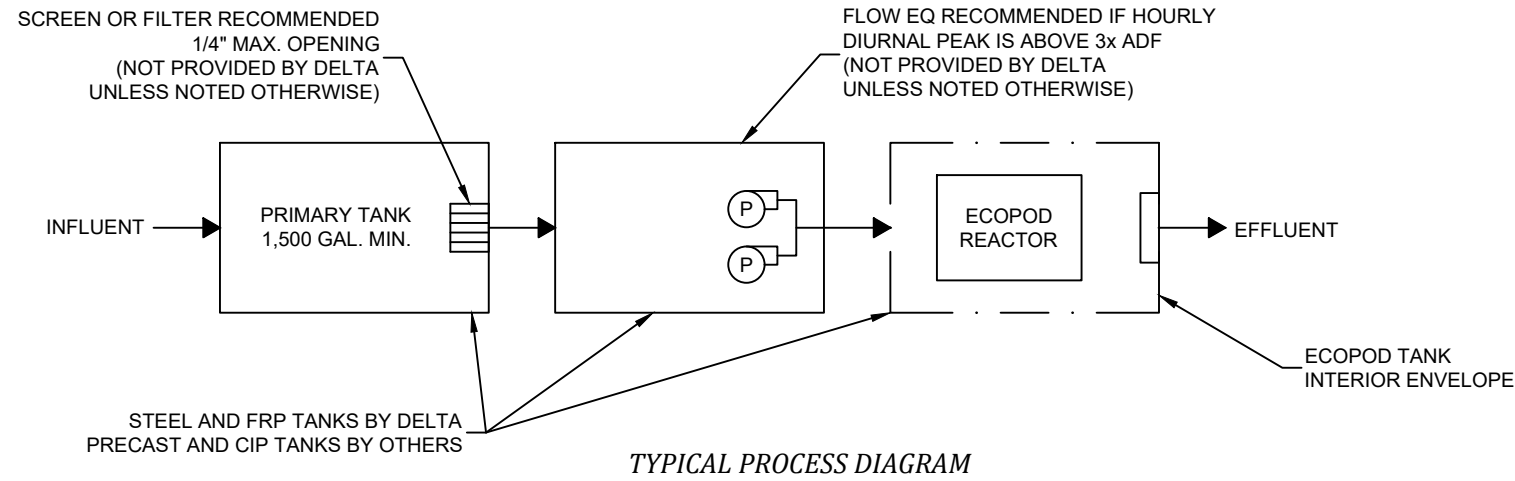


- GENERAL NOTES
- THE DRAWINGS DEPICTED HEREIN REPRESENT PRELIMINARY LAYOUTS OF A WASTEWATER TREATMENT SYSTEM CAPABLE OF TREATING THE DOMESTIC WASTE CONSTITUENTS NOTED IN TABLE 1.
  - ECOPOD REACTOR BOX SHALL BE CONSTRUCTED OF AISI 304/304L STAINLESS STEEL.
  - TANK MATERIAL OPTIONS:
    - CARBON STEEL PER ASTM A36 w/COATING PER DELTA STANDARDS.
    - FIBERGLASS REINFORCED PLASTIC (FRP) (NOT ALL MODELS).
    - PRECAST CONCRETE PER ENGINEER OF RECORD REQUIREMENTS, BY OTHERS.
    - CAST-IN-PLACE CONCRETE PER ENGINEER OF RECORD REQUIREMENTS, BY OTHERS.
  - BLOWERS, WEIRS, CONTROL PANELS, AND VARIOUS SMALL PARTS WILL BE SHIPPED UNASSEMBLED AND SECURELY PACKAGED, TO BE INSTALLED BY CONTRACTOR.
  - SEE INSTALLATION GUIDE FOR INSTALLATION DETAILS.
  - CONTACT AN IWT/DELTA REPRESENTATIVE REGARDING DEVIATIONS FROM THESE STANDARDS.

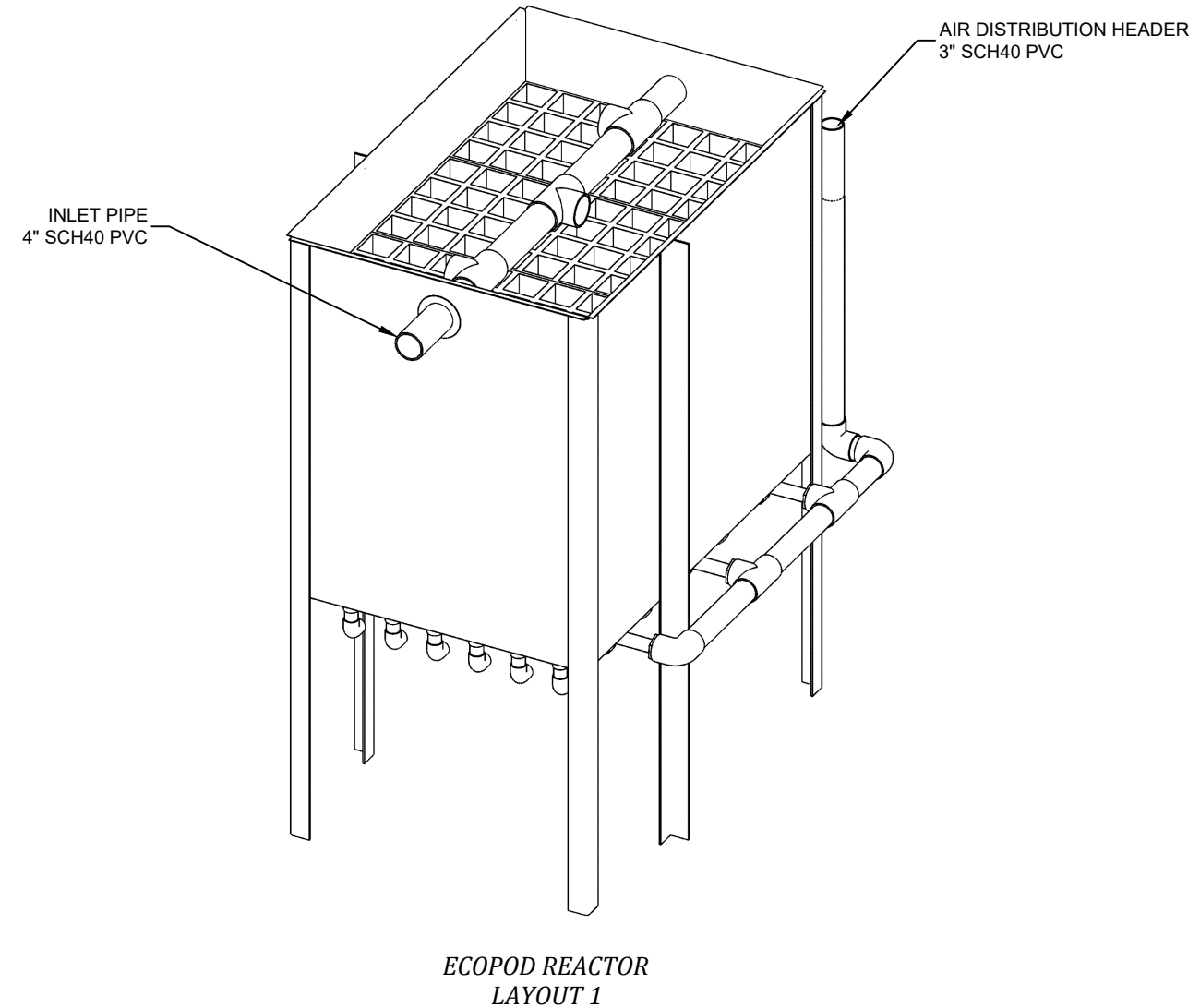
PARAMETER	MINIMUM	MAXIMUM
AVERAGE DAILY FLOW	-	3,000 GPD
PEAK DAILY FLOW	-	4,500 GPD
INFLUENT BOD <sub>5</sub>	-	7.5 LB/DAY
AIR TEMPERATURE	-	115 °F
WATER TEMPERATURE	68 °F	68 °F
RELATIVE HUMIDITY	10%	90%
SITE ELEVATION	0 FT AMSL	3,000 FT AMSL

PARAMETER	UP TO 1,000 FT AMSL	1,000 TO 3,000 FT AMSL
STANDARD AIRFLOW	36 SCFM	42 SCFM
SITE AIR REQUIREMENT	41 ICFM	51 ICFM
BLOWER INLET AIR	51 ICFM	51 ICFM
AIR HEADER SIZE	3 IN	3 IN
MIN. TANK VENT X-SECT. AREA	21 IN <sup>2</sup> 2 EA 4" OR 1 EA 6"	21 IN <sup>2</sup> 2 EA 4" OR 1 EA 6"
BLOWER SELECTION	FPZ SCL R30-MD	FPZ SCL R30-MD
NOISE LEVEL	72.2 dB(A)	72.2 dB(A)
AIR TEMPERATURE RISE <sup>1</sup>	29 F (16.1 C)	29 F (16.1 C)
BLOWER INLET DIAMETER	1.25 IN NPT	1.25 IN NPT
BLOWER OUTLET DIAMETER	1.25 IN NPT	1.25 IN NPT
MOTOR POWER RATING <sup>2</sup>	2 HP	2 HP
OPERATING POWER	0.92 KW	0.92 KW

1. REVIEW BLOWER DISCHARGE AIR TEMPERATURE WHEN SPECIFYING AIR MAIN PIPING MATERIAL.  
2. REVIEW BLOWER MANUFACTURER CUTSHEETS FOR ADDITIONAL ELECTRICAL INFORMATION.



DESCRIPTION	QTY	MAKE	MODEL
ECOPOD REACTOR	1	DELTA	E300D
BLOWER	1	FPZ	PER TABLE 2
CONTROL PANEL	1	DELTA	PER DESIGN
24" S.S. EFFLUENT WEIR	1	DELTA	TROUGH-3.0



NO.	DATE	INITIALS	DESCRIPTION
A	10/12/21	AOB	ADDED TRIMETRIC VIEW

**delta** treatment systems  
An Infiltrator Water Technologies Company

Delta Treatment Systems, LLC

COPYRIGHT (C) 2021 DELTA TREATMENT SYSTEMS, LLC (DTS). INFORMATION CONTAINED HEREIN IS CONFIDENTIAL AND IS THE PROPERTY OF DTS. NO PART OF THIS DRAWING SHALL BE REPRODUCED, DISTRIBUTED, DISCLOSED, OR USED BY ANY PERSON OR ORGANIZATION, IN WHOLE OR IN PART, WITHOUT THE PRIOR WRITTEN PERMISSION OF DTS. THIS INFORMATION IS BASED ON SPECIFIC INPUT PARAMETERS AND IS FOR BUDGETARY OR PRELIMINARY USE ONLY. USE AND INTERPRETATION OF THIS INFORMATION AND DETERMINING THE APPLICABILITY TO A SPECIFIC PROJECT IS AT THE SOLE DISCRETION OF THE USER AND/OR THE ENGINEER OF RECORD.

DELTA ECOPOD E300D  
STANDARD DESIGN FOR BOD REDUCTION

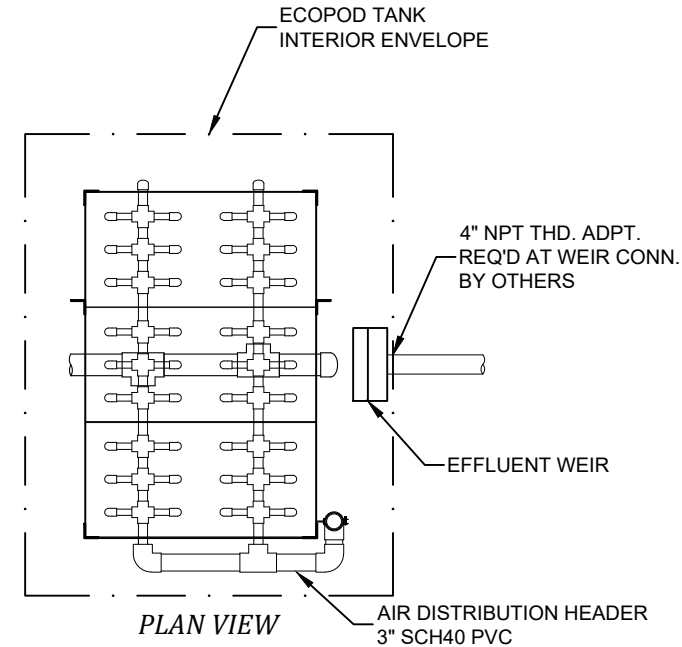
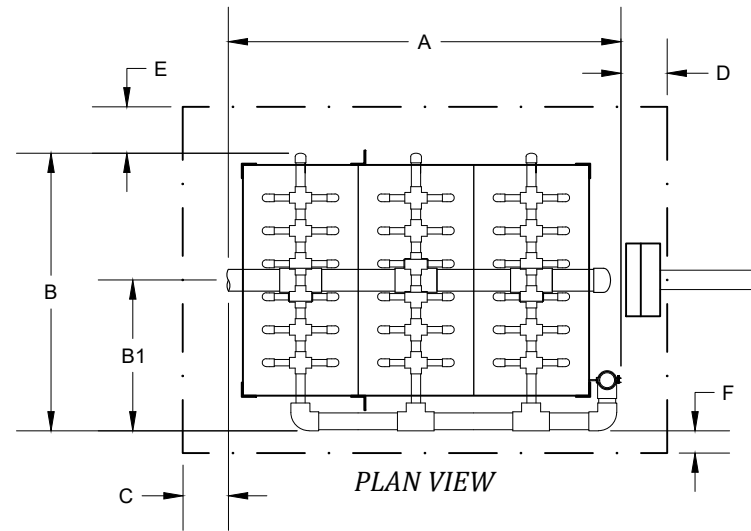
GENERAL ARRANGEMENT  
DESIGN OVERVIEW

HORIZ. SCALE	PROJECT NO.
N/A	N/A
VERT. SCALE	DATE
N/A	02/11/2021
DRAWN BY	DESIGNED BY
CGK	AOB
DRAWING NO.	SHEET NO.
C1.0	01 of 02

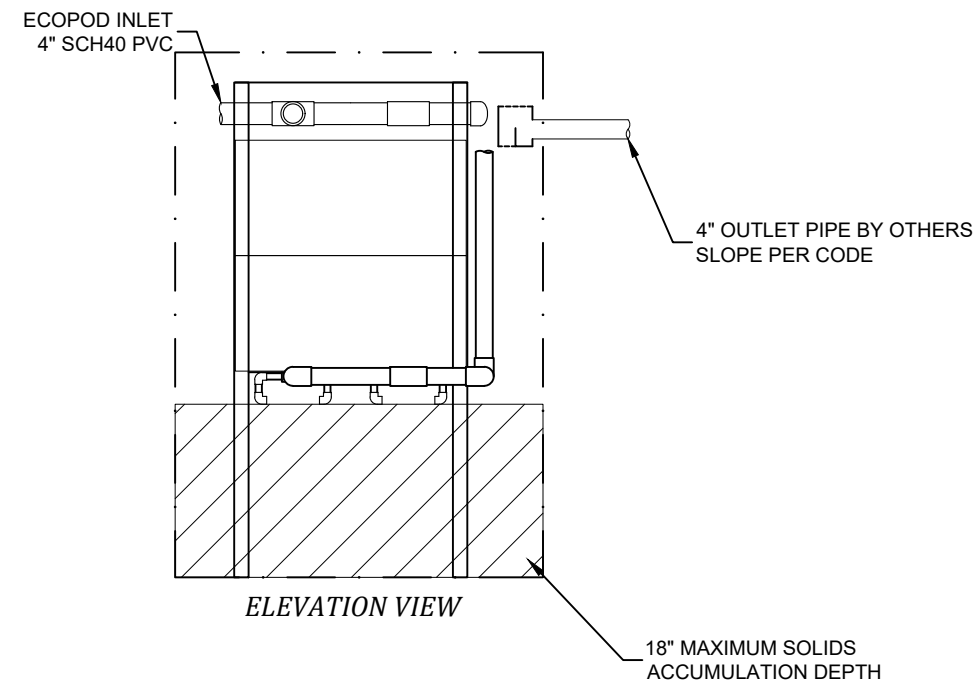
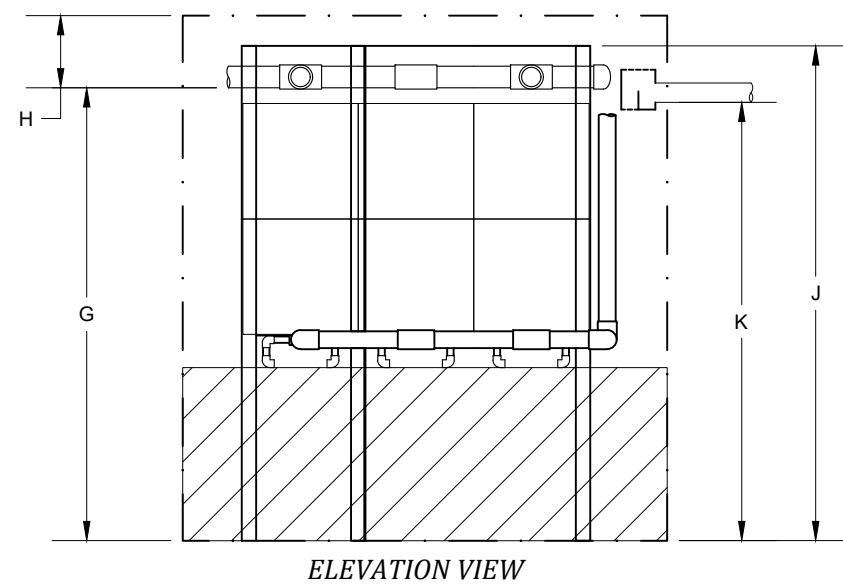
- GENERAL NOTES
- ECOPOD REACTOR BOX SHALL BE CONSTRUCTED OF AISI 304/304L STAINLESS STEEL.
  - TANK MATERIAL OPTIONS:
    - CARBON STEEL PER ASTM A36 w/COATING PER DELTA STANDARDS.
    - FIBERGLASS REINFORCED PLASTIC (FRP) (NOT ALL MODELS).
    - PRECAST CONCRETE PER ENGINEER OF RECORD REQUIREMENTS, BY OTHERS.
    - CAST-IN-PLACE CONCRETE PER ENGINEER OF RECORD REQUIREMENTS, BY OTHERS.
  - SEE INSTALLATION GUIDE FOR INSTALLATION DETAILS.
  - CONTACT AN IWT/DELTA REPRESENTATIVE REGARDING DEVIATIONS FROM THESE STANDARDS.

SITE ELEVATION		LAYOUT ID	REACTOR WEIGHT		A OVERALL LENGTH		B OVERALL WIDTH		B1 AIR HEADER CL DIM	
FT	M		LB	KG	IN	CM	IN	CM	IN	CM
0-3,000	0-914	1	950	431	82	209	59	150	32	82
0-3,000	0-914	2	880	400	58	148	83	211	44	112

1. SOME REACTOR LAYOUTS NOT AVAILABLE IN FIBERGLASS TANKS. CONTACT AN IWT/DELTA REPRESENTATIVE FOR DETAILS.




DIMENSION	IN	CM
C VESSEL FRONT SPACE	12	30
D VESSEL REAR SPACE	18	46
E AIR HEADER SIDE INSIDE SPACE	6	15
F NO HEADER SIDE INSIDE SPACE	6	15



DIMENSION	IN	CM
G INLET INVERT	92	234
H PLENUM SPACE ABOVE INLET INVERT	10	25
J MEDIA REACTOR HEIGHT	101	257
K OUTLET INVERT	89	226

1. ONE (1 EA.) INLET AND ONE (1 EA.) OUTLET ACCESS HATCH REQUIRED, 24" DIA MINIMUM.

NO.	DATE	INITIALS	DESCRIPTION
A	05/17/21	AOB	CREATED NEW LAYOUT


**Delta Treatment Systems, LLC**  
An Infiltrator Water Technologies Company

COPYRIGHT (C) 2021 DELTA TREATMENT SYSTEMS, LLC (DTS). INFORMATION CONTAINED HEREIN IS CONFIDENTIAL AND IS THE PROPERTY OF DTS. NO PART OF THIS DRAWING SHALL BE REPRODUCED, DISTRIBUTED, DISCLOSED, OR USED BY ANY PERSON OR ORGANIZATION, IN WHOLE OR IN PART, WITHOUT THE PRIOR WRITTEN PERMISSION OF DTS. THIS INFORMATION IS BASED ON SPECIFIC INPUT PARAMETERS AND IS FOR BUDGETARY OR PRELIMINARY USE ONLY. USE AND INTERPRETATION OF THIS INFORMATION AND DETERMINING THE APPLICABILITY TO A SPECIFIC PROJECT IS AT THE SOLE DISCRETION OF THE USER AND/OR THE ENGINEER OF RECORD.

**DELTA ECOPOD E300D**  
**STANDARD DESIGN FOR BOD REDUCTION**

**GENERAL ARRANGEMENT**  
**LAYOUT DIMENSIONS**

HORIZ. SCALE	PROJECT NO.
N/A	N/A
VERT. SCALE	DATE
N/A	05/17/2021
DRAWN BY	DESIGNED BY
CGK	AOB
DRAWING NO.	SHEET NO.
C1.1	02 of 02

C:\Users\Ave\OneDrive\Desktop\Drawings\ECOPOD\STANDARD COMMERCIAL WORK IN PROGRESS\ECOPOD Commercial EcoPod Drawings\WIP Rev A.dwg