

SCHEMATIC

NO.	DATE	INITIALS	DESCRIPTION



INFILTRATOR WATER TECHNOLOGIES LLC
4 Business Park Road P.O. Box 768
Old Saybrook, CT 06475 USA (860) 221-4436

COPYRIGHT (C) 2025 INFILTRATOR WATER TECHNOLOGIES, LLC (IWT). CONFIDENTIAL. INFORMATION CONTAINED HEREIN IS CONFIDENTIAL AND IS THE PROPERTY OF IWT. ALL LAYOUTS AND DESIGNS ARE SOLELY FOR THE PURPOSE PROVIDED. NO PART OF THIS DESIGN OR DRAWING SHALL BE REPRODUCED, DISTRIBUTED, DISCLOSED, OR USED BY ANY PERSON OR ORGANIZATION, IN WHOLE OR IN PART, WITHOUT THE PRIOR WRITTEN PERMISSION OF IWT.

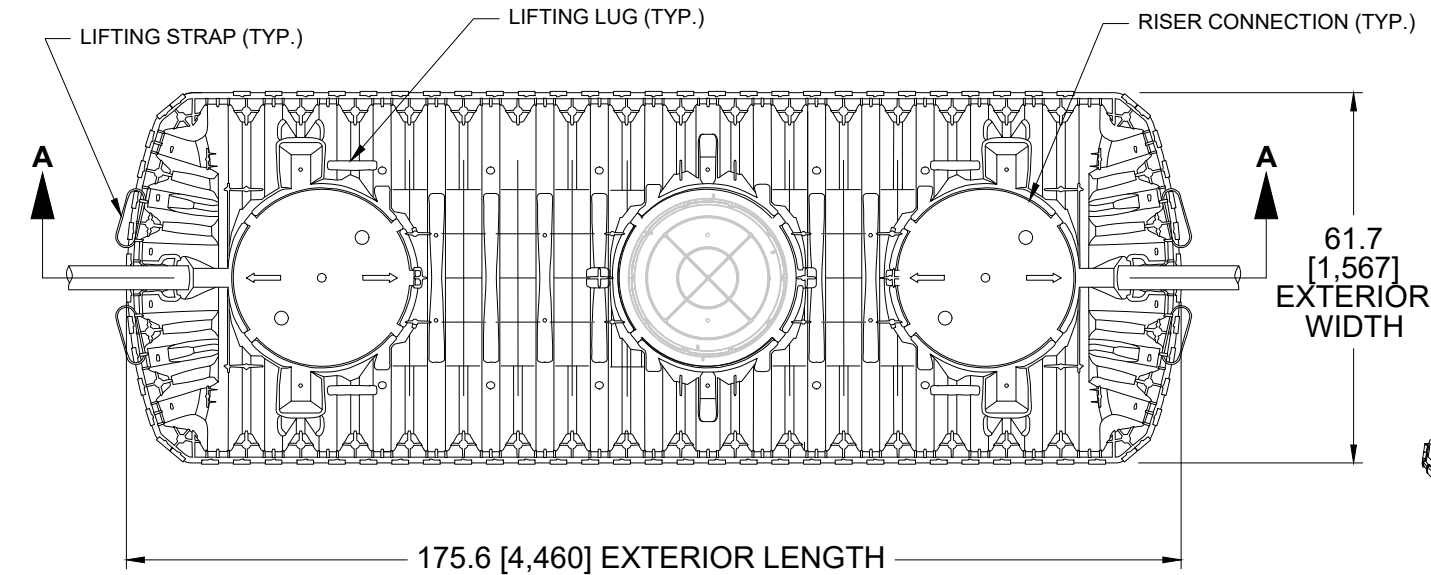
GRAVITY GIT 1530 GREASE INTERCEPTOR
STRUCTURAL SLAB DETAIL

TYPICAL DETAIL

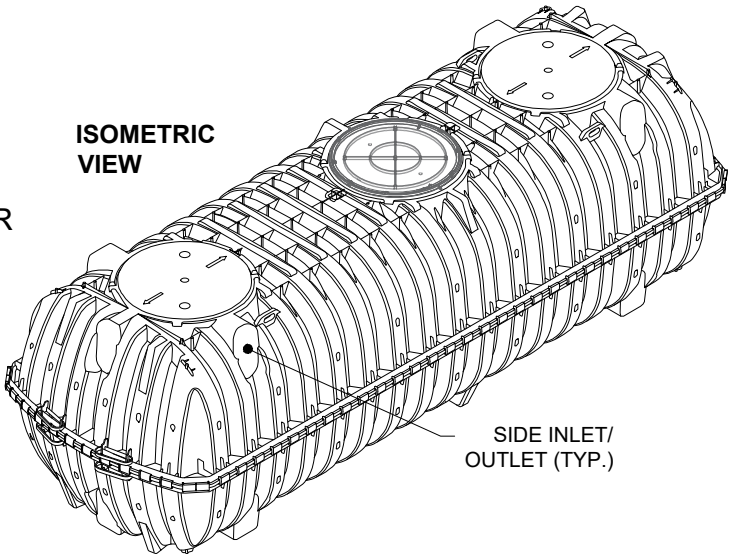
HORIZ. SCALE 3/8" = 1' - 0"	PROJECT NO. P/N
VERT. SCALE 3/8" = 1' - 0"	DATE 02/23/2024
DRAWN BY EA	DESIGNED BY DH
DRAWING NO. C1.0	SHEET NO. 01 of 02

NOTES:

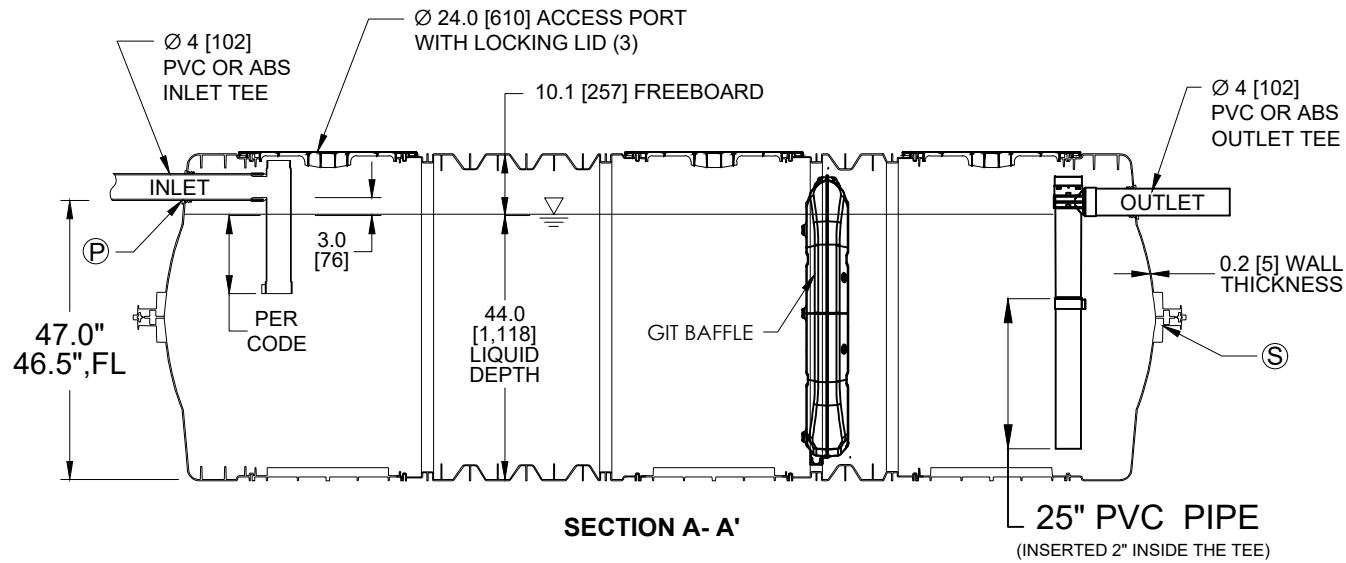
- ALL DRAWING DIMENSIONS IN INCHES [MILLIMETERS] OR AS NOTED.
- EXTERIOR OF ACCESS OPENING LID INCLUDES THE FOLLOWING WARNING IN ENGLISH, FRENCH & SPANISH: "DANGER DO NOT ENTER: POISON GASES."
- TANK MARKINGS WILL INCLUDE: MANUFACTURER NAME, MODEL NUMBER, LIQUID CAPACITY, DATE OF MANUFACTURE, MAXIMUM BURIAL DEPTH, INLET, AND OUTLET.
- MAXIMUM BURIAL DEPTH IS 48 IN [1,219 MM].
- MINIMUM BURIAL DEPTH IS 6 IN [152 MM].
- TANK IS FOR NON-TRAFFIC APPLICATIONS.
- LENGTH TO WIDTH RATIO IS 2.8:1 (175.6-INCH LENGTH / 61.7-INCH WIDTH = 2.8).
- FOR GRAVITY APPLICATIONS ONLY. DO NOT USE FOR PRESSURE APPLICATIONS.
- INFILTRATOR GREASE INTERCEPTORS ARE INTENDED TO BE SPECIFIED FOR FOOD SERVICE ESTABLISHMENTS, SUCH AS RESTAURANTS, IN GRAVITY APPLICATIONS TO TRAP AND RETAIN FATS, OILS, AND GREASE (FOG) UNTIL REMOVED BY A LICENSED WASTE HAULER.
- INSTALLATION OF THIS GREASE INTERCEPTOR IS LIMITED TO THE OUTDOORS AND BELOW-GRADE. FOLLOW INFILTRATOR'S INSTALLATION INSTRUCTION MANUAL WHILE INSTALLING. INTERCEPTORS MUST BE INSTALLED ACCORDING TO STATE AND/OR LOCAL REGULATIONS.
- MANUFACTURED IN WINCHESTER, KENTUCKY, USA
- MADE WITH RECYCLED POLYPROPYLENE EMBEDDED WITH FIBERGLASS.
- REQUIRE COMPACTED BACKFILL IN 12" LIFTS. STRUCTURAL RIBBING AND INTERNAL FIBERGLASS SUPPORT POSTS REINFORCE STRUCTURAL INTEGRITY.
- THE INLET AND OUTLET ARE FORMED USING A 5" HOLE SAW AND SUPPLIED GASKETS THAT PRODUCES A 4" PIPE SIZE DIAMETER. SUPPLIED TEES ALLOW FOR PIPE INSPECTION AND CLEANING.
- MAXIMUM OPERATING TEMPERATURE: 150° F
- TOTAL LIQUID CAPACITY: 1,787 GAL (6,765 L)
WORKING LIQUID CAPACITY: 1,537 GAL (5,818 L)
- MAXIMUM GREASE CAPACITY: 384 GAL (2,801 LBS)
MAXIMUM SOLIDS CAPACITY: 544 GAL. (2,059 L)
- WEIGHT: 570 LBS (256 KG)
- CERTIFIED WITH IAPMO Z1001
- REFERENCE INFILTRATOR'S GREASE INTERCEPTOR INSTALLATION INSTRUCTION MANUAL FOR AASHTO H-20 TRAFFIC RATED INSTALLATION REQUIREMENTS AND RISER RECOMMENDATIONS.



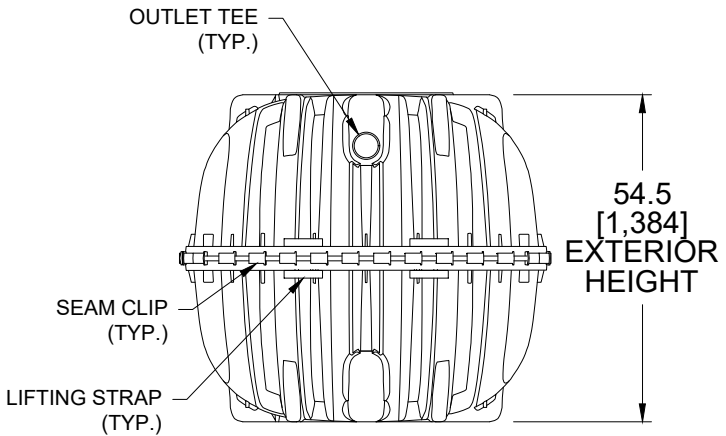
TOP VIEW



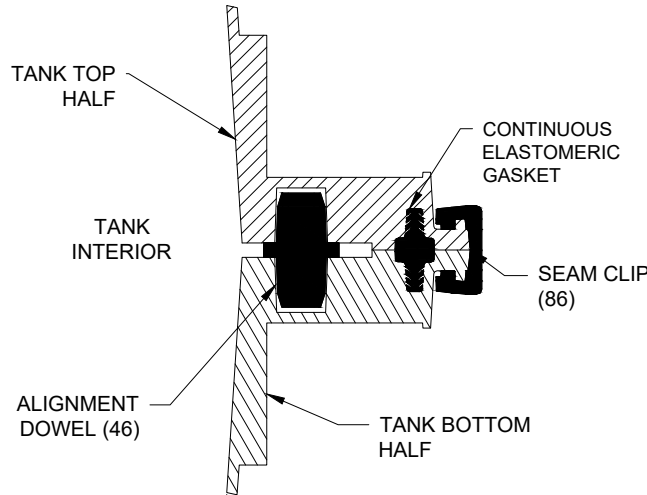
ISOMETRIC VIEW



SECTION A-A'



END VIEW



PIPE PENETRATION SECTION DETAIL

MID-HEIGHT SEAM SECTION DETAIL


TANK EXTERIOR	
LENGTH	175.6 [4,460]
WIDTH	61.7 [1,567]
HEIGHT	54.5 [1,384]

LIQUID DEPTH	44.0 [1,118]
INVERT DROP	3.0" [76]
FREEBOARD	2.5" [64], FL
	10.1 [257]

TOTAL CAPACITY	1,765 GAL [6,681 L]
WORKING VOLUME	1,509 GAL [5,712 L]
MAXIMUM GREASE CAPACITY	384 GAL [1,454 L]
MAXIMUM SOLIDS CAPACITY	544 GAL [2,059 L]

SCHEMATIC

NO.	DATE	INITIALS	DESCRIPTION



INFILTRATOR WATER TECHNOLOGIES LLC
4 Business Park Road P.O. Box 768
Old Saybrook, CT 06475 USA (860) 221-4436

COPYRIGHT (C) 2025 INFILTRATOR WATER TECHNOLOGIES, LLC (IWT). CONFIDENTIAL: INFORMATION CONTAINED HEREIN IS CONFIDENTIAL AND IS THE PROPERTY OF DTS. ALL LAYOUTS AND DESIGNS ARE SOLELY FOR THE PURPOSE PROVIDED. NO PART OF THIS DESIGN OR DRAWING SHALL BE REPRODUCED, DISTRIBUTED, DISCLOSED, OR USED BY ANY PERSON OR ORGANIZATION, IN WHOLE OR IN PART, WITHOUT THE PRIOR WRITTEN PERMISSION OF IWT.

GIT-1530 INTERCEPTOR SPECIFICATION

TYPICAL DETAIL

HORIZ. SCALE	PROJECT NO.
NTS	P/N
VERT. SCALE	DATE
NTS	07/01/2024
DRAWN BY	DESIGNED BY
EA	-
DRAWING NO.	SHEET NO.
C1.1	02 of 02