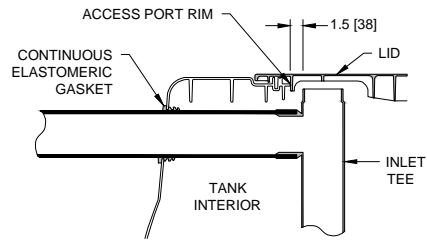
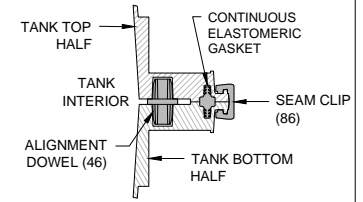


TOP VIEW



Ⓟ PIPE PENETRATION SECTION DETAIL

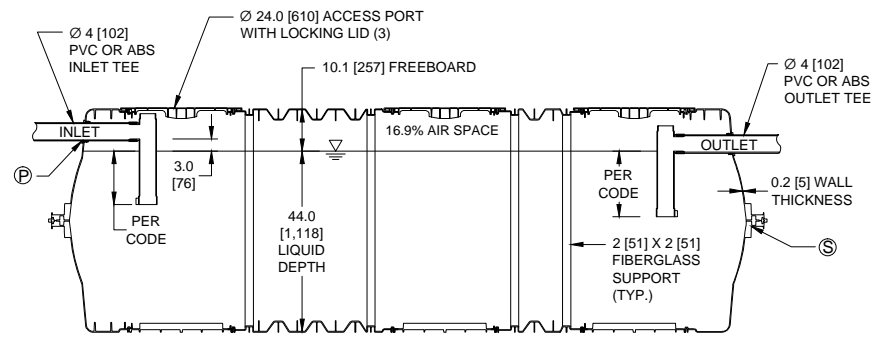


Ⓢ MID-HEIGHT SEAM SECTION DETAIL

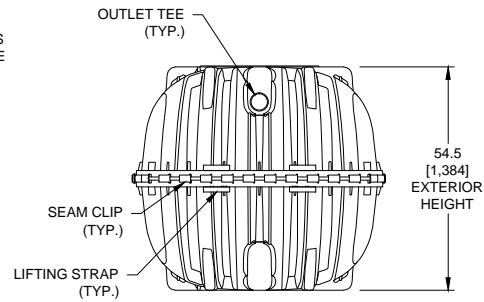
| TANK EXTERIOR | |
|---------------|---------------|
| LENGTH | 175.6 [4,460] |
| WIDTH | 61.7 [1,567] |
| HEIGHT | 54.5 [1,384] |

| | |
|--------------|--------------|
| LIQUID DEPTH | 44.0 [1,118] |
| INVERT DROP | 3.0 [76] |
| FREEBOARD | 10.1 [257] |

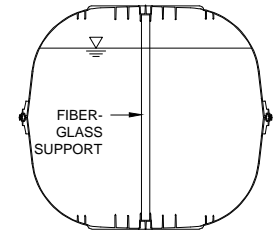
| | |
|----------------|---------------------|
| TOTAL CAPACITY | 1,787 GAL [6,765 L] |
| WORKING VOLUME | 1,537 GAL [5,818 L] |



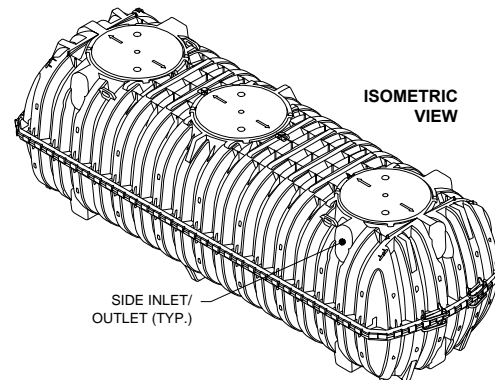
SECTION A - A'



END VIEW



SECTION B - B'



ISOMETRIC VIEW

NOTES:

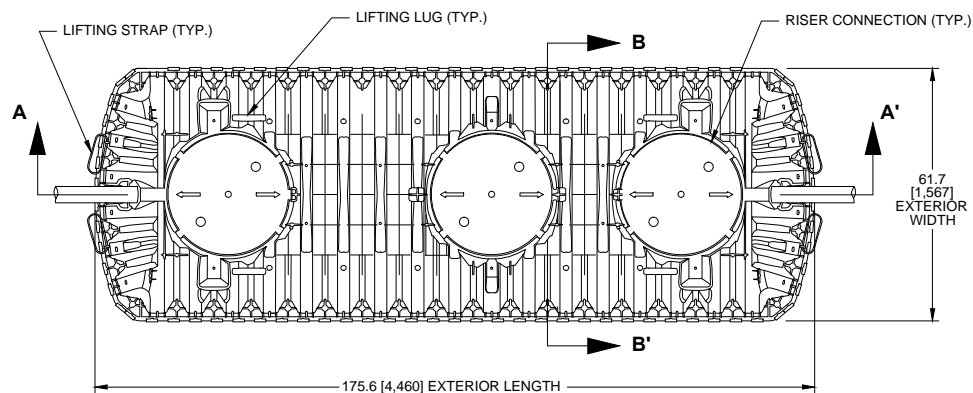
1. ALL DRAWING DIMENSIONS IN INCHES (MILLIMETERS) OR AS NOTED.
2. EXTERIOR OF ACCESS OPENING LID INCLUDES THE FOLLOWING WARNING IN ENGLISH, FRENCH & SPANISH: "DANGER DO NOT ENTER: POISON GASES."
3. TANK MARKINGS WILL INCLUDE: MANUFACTURER NAME, MODEL NUMBER, LIQUID CAPACITY, DATE OF MANUFACTURE, MAXIMUM BURIAL DEPTH, INLET, AND OUTLET.
4. MAXIMUM BURIAL DEPTH IS 48 in [1,219 mm].
5. MINIMUM BURIAL DEPTH IS 6 in [152 mm].
6. TANK IS FOR NON-TRAFFIC APPLICATIONS.
7. AIRSPACE IS 16.9%.
8. OUTLET TEE IS COMPATIBLE WITH AN EFFLUENT FILTER.
9. LENGTH TO WIDTH RATIO IS 2.8:1 (175.6-INCH LENGTH / 61.7-INCH WIDTH = 2.8).



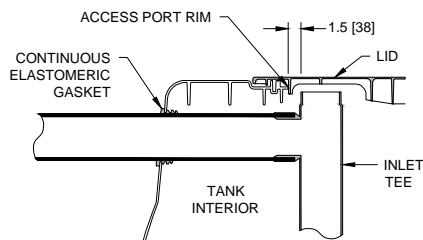
INFILTRATOR WATER TECHNOLOGIES
4 Business Park Rd. Old Saybrook, CT 06475
(800) 221-4436

IM-1530
1-Compartment Septic/Pump Tank Configuration

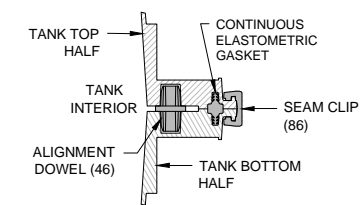
| | |
|---------------------|------------------|
| Drawn by: JLB | Date: 10/09/2013 |
| Scale: NOT TO SCALE | Checked by: DJL |
| | Sheet: 1 of 1 |



TOP VIEW



PIPE PENETRATION SECTION DETAIL

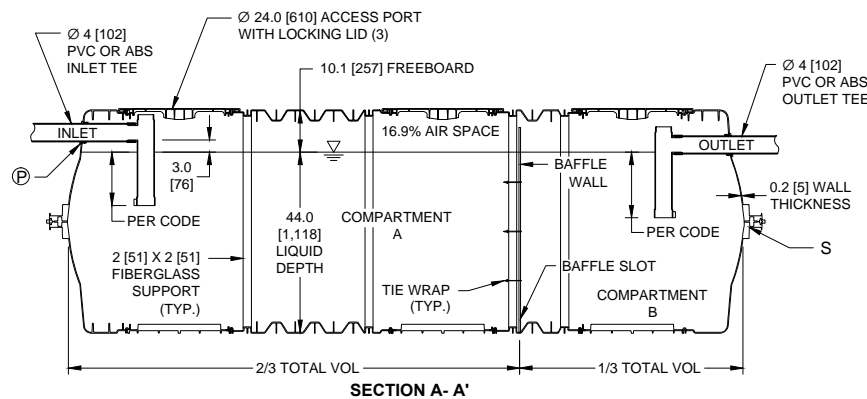


MID-HEIGHT SEAM SECTION DETAIL

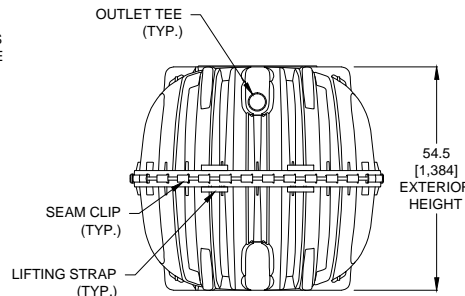
| TANK EXTERIOR | |
|---------------|---------------|
| LENGTH | 175.6 [4,460] |
| WIDTH | 61.7 [1,567] |
| HEIGHT | 54.5 [1,384] |

| | |
|--------------|--------------|
| LIQUID DEPTH | 44.0 [1,118] |
| INVERT DROP | 3.0 [76] |
| FREEBOARD | 10.1 [257] |

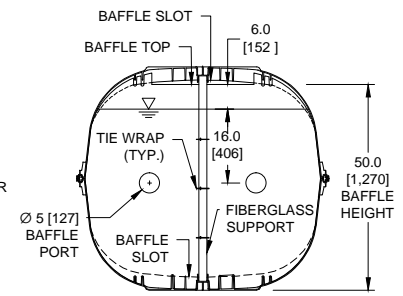
| | |
|--------------------|---------------------|
| TOTAL CAPACITY | 1,787 GAL [6,765 L] |
| WORKING VOLUME | 1,537 GAL [5,818 L] |
| COMPARTMENT A VOL. | 1,025 GAL [4,561 L] |
| COMPARTMENT B VOL. | 512 GAL [1,938 L] |



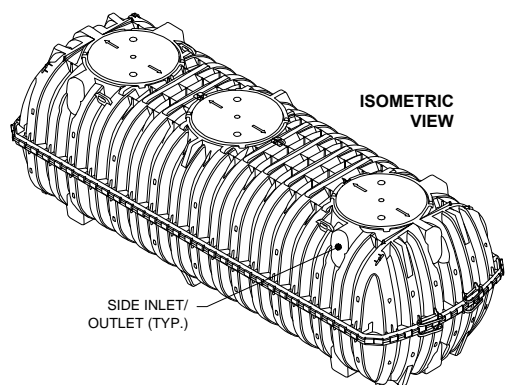
SECTION A - A'



END VIEW



SECTION B - B'
BAFFLE DETAIL



ISOMETRIC VIEW

NOTES:

- ALL DRAWING DIMENSIONS IN INCHES [MILLIMETERS] OR AS NOTED.
- EXTERIOR OF ACCESS OPENING LID INCLUDES THE FOLLOWING WARNING IN ENGLISH, FRENCH & SPANISH: "DANGER DO NOT ENTER: POISON GASES."
- TANK MARKINGS WILL INCLUDE: MANUFACTURER NAME, MODEL NUMBER, LIQUID CAPACITY, DATE OF MANUFACTURE, MAXIMUM BURIAL DEPTH, INLET, AND OUTLET.
- MAXIMUM BURIAL DEPTH IS 48 in [1,219 mm].
- MINIMUM BURIAL DEPTH IS 6 in [152 mm].
- TANK IS FOR NON-TRAFFIC APPLICATIONS.
- AIRSPACE IS 16.9%.
- OUTLET TEE IS COMPATIBLE WITH AN EFFLUENT FILTER.
- LENGTH TO WIDTH RATIO IS 2.8:1 (175.6-INCH LENGTH / 61.7-INCH WIDTH = 2.8).
- FREE VENT AREA BETWEEN TOP OF BAFFLE WALL AND BOTTOM OF TOP BAFFLE SLOT IS 136.5 in².
- BAFFLE WALL THICKNESS IS 0.31 in [8 mm].



INFILTRATOR WATER TECHNOLOGIES
4 Business Park Rd. Old Saybrook, CT 06475
(800) 221-4436

IM-1530
2-Compartment Septic Tank Configuration

| | |
|---------------------|-------------------------------|
| Drawn by: JLB | Date: 10/09/2013 |
| Scale: NOT TO SCALE | Checked by: DJL Sheet: 1 of 1 |

G:\Technical Resources\New\02-Product\Tanks\Injection-Molded Tank\IM-1530\IM-1530_GENERIC_1 AND 2 COMPARTMENT_10092013