

IM-Tanks

IM-1060

The Infiltrator IM-1060 is a lightweight strong and durable septic tank. This watertight tank design is offered with Infiltrator's line of custom-fit risers and heavy-duty lids. Infiltrator injection molded tanks provide a revolutionary improvement in plastic septic tank design, offering long-term exceptional strength and watertightness.



IM-1060

Benefits



Strong injection molded polypropylene construction



Lightweight plastic construction and inboard lifting lugs allow for easy delivery and handling



Integral heavy-duty green lids that interconnect with TW™ risers and pipe riser solutions



Structurally reinforced access ports eliminate distortion during installation and pump-outs



Reinforced structural ribbing and fiberglass bulkheads offer additional strength



Can be installed with 6" to 48" of cover

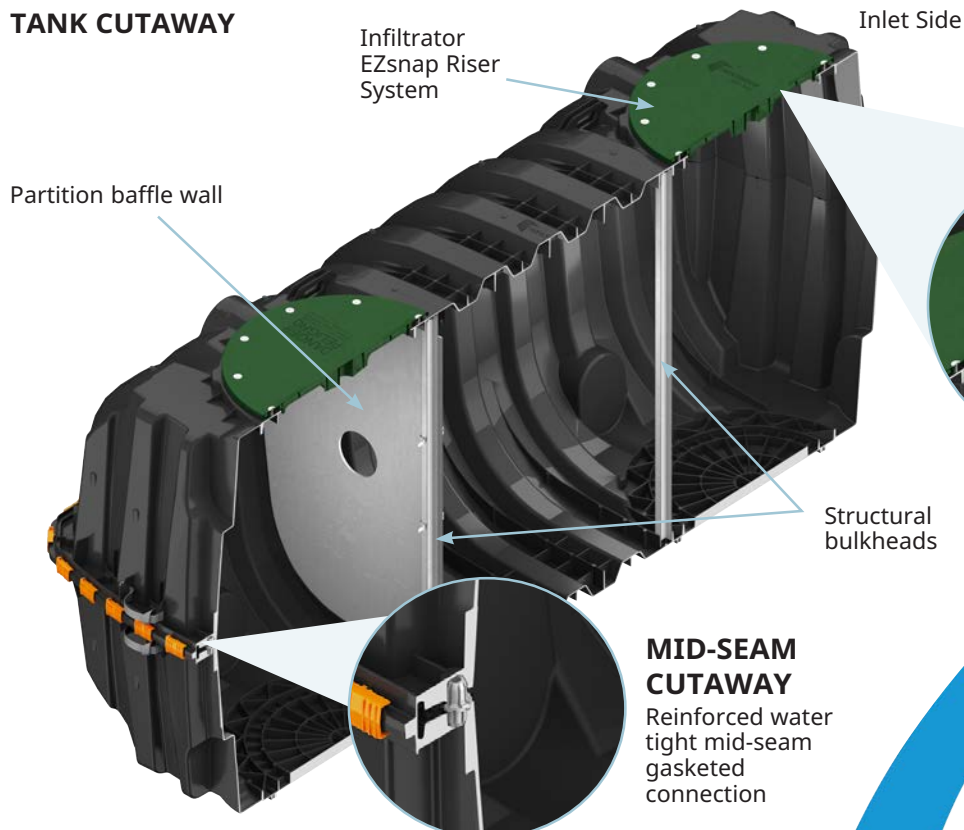


Suitable for use as a septic tank, pump tank, or rain-water (non-potable) tank



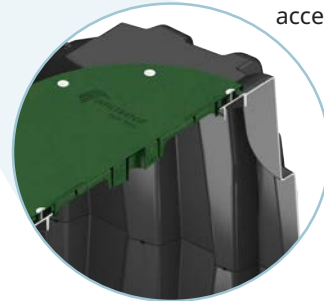
No special water filling requirements are necessary

TANK CUTAWAY



HEAVY DUTY LID CUTAWAY

Reinforced 24" structural access port



Infiltrator
Water Technologies
Part of **ADS**

infiltratorwater.com • (800) 221-4436

IM-1060 General Specifications and Illustrations

The IM-1060 is an injection molded two piece mid-seam plastic tank. The IM-1060 injection molded plastic design allows for a mid-seam joint that has precise dimensions for accepting an engineered EPDM gasket. Infiltrator's gasket design utilizes technology from the water industry to deliver proven means of maintaining a watertight seal.

The two-piece design is permanently fastened using a series of non-corrosive plastic alignment dowels and locking seam clips. The IM-1060 is assembled and sold through a network of certified Infiltrator distributors.



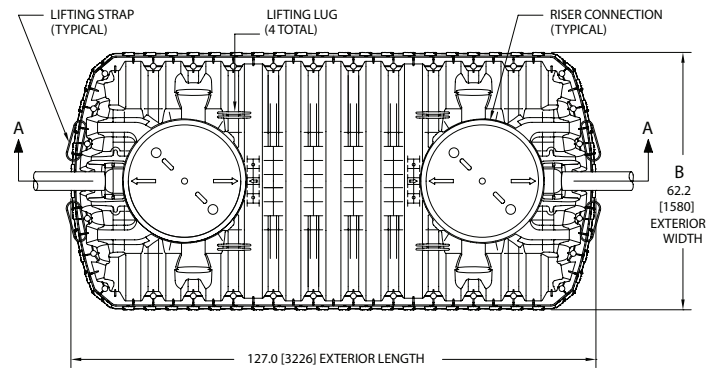
SCAN ME

Must be backfilled and installed in accordance with the Infiltrator IM- and CM-Series Septic Tank General

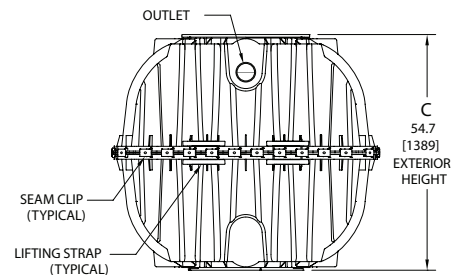
Installation Instructions. For shallow ground water conditions reference the Infiltrator IM- and CM-Series Tank Buoyancy Control Guidance.

Please visit www.infiltratorwater.com or scan QR code for the latest information.

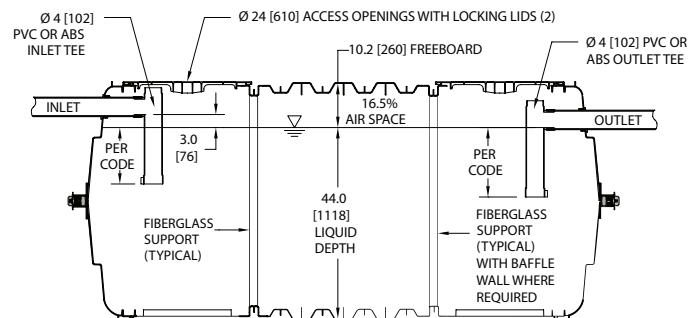
IM-1060	
Working Capacity	1094 gal (4141 L)
Total Capacity	1287 gal (4872 L)
Airspace	16.5%
Length	127" (3226 mm)
Width	62.2" (1580 mm)
Length-to-Width Ratio	2.3 to 1
Height	54.7" (1389 mm)
Liquid Level	44" (1118 mm)
Invert Drop	3" (76 mm)
Fiberglass Supports	2
Compartments	1 or 2
Maximum Burial Depth	48" (1219 mm)
Minimum Burial Depth	6" (152 mm)
Maximum Pipe Diameter	6" (152 mm)
Weight	320 lbs (145 kg)



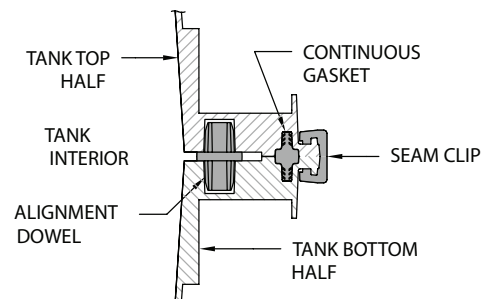
TOP VIEW



SIDE VIEW



END VIEW



MID-HEIGHT SEAM SECTION

Contact Infiltrator's Technical Services Department for assistance at 1-800-221-4436 or info@infiltratorwater.com