

IM-Tanks

IM-540 In-Series Tank Application

Lightweight strong and durable septic/pump tank, making it optimal for use in-series with other tanks.

This watertight tank design is offered with Infiltrator's line of custom-fit risers and heavy-duty lids. Infiltrator injection molded tanks provide a revolutionary improvement in plastic tank design, offering long-term exceptional strength and watertightness.



IM-540

Benefits



Strong injection molded polypropylene construction



Lightweight plastic construction and inboard lifting lugs allow for easy delivery and handling



Integral heavy-duty green lids that interconnect with the EZsnap riser and pipe riser solutions



Structurally reinforced access ports eliminate distortion during installation and pump-outs



Reinforced structural ribbing offers additional strength



Can be installed with 6" to 48" of cover



Can be pumped dry during pump-outs



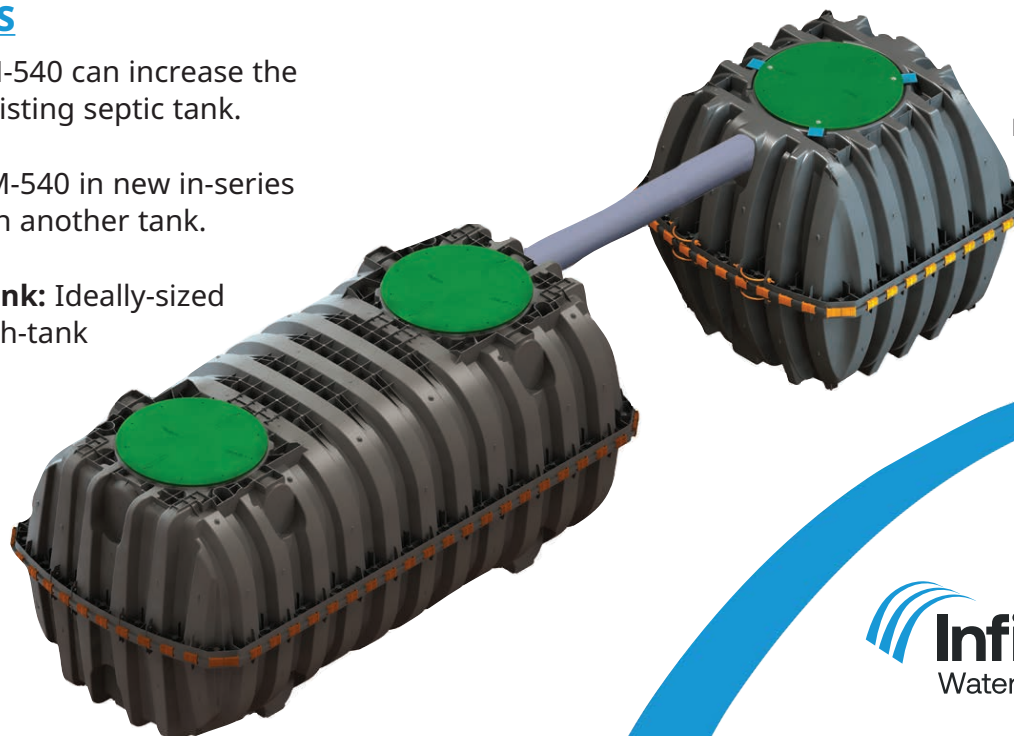
No special water filling requirements are necessary

APPLICATIONS

Retrofit: The IM-540 can increase the volume of an existing septic tank.

New: Use the IM-540 in new in-series installations with another tank.

Trash/Pump-Tank: Ideally-sized for use as a trash-tank or pump tank.



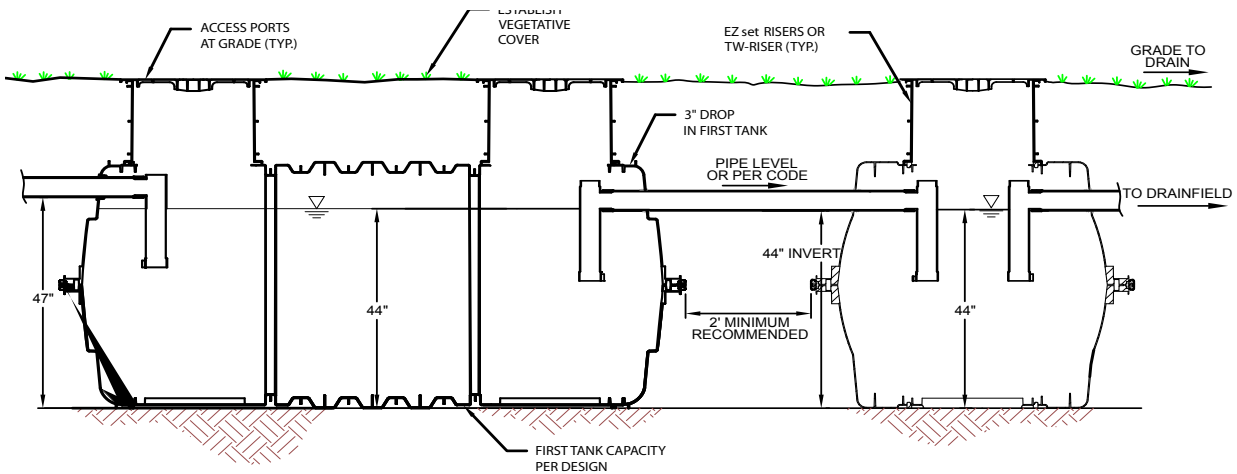
IM-1060

IM-540

 **Infiltrator**
Water Technologies
Part of 

infiltratorwater.com • (800) 221-4436

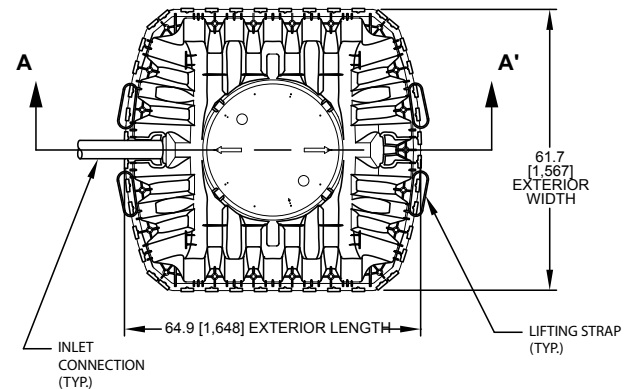
IM-540 In-Series General Specifications and Illustrations



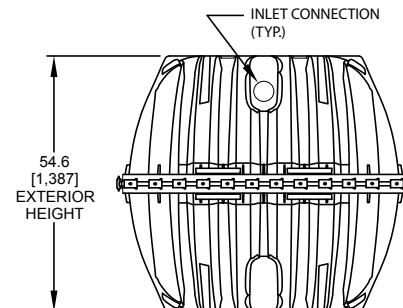
The IM-540 is an injection molded two piece mid-seam plastic tank. The injection molded plastic design allows for a mid-seam joint that has precise dimensions for accepting an engineered EPDM gasket. Infiltrator's gasket design utilizes technology from the water industry to deliver proven means of maintaining a watertight seal. The two-piece design is permanently fastened using a series of non-corrosive plastic alignment dowels and locking seam clips. The IM-540 is assembled and sold through a network of certified Infiltrator distributors.

Must be backfilled and installed in accordance with Infiltrator Water Technologies, Infiltrator IM-Series Septic Tank General Installation Instructions and for shallow ground water conditions reference the Infiltrator IM-Series Tank Buoyancy Control Guidance.

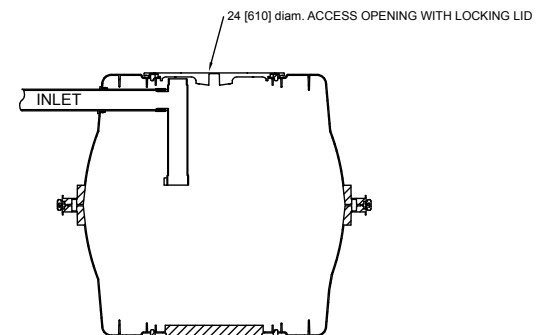
Please visit www.infiltratorwater.com for the latest information.



TOP VIEW



SIDE VIEW



END VIEW

IM-540	
Working Capacity	475 gal (1799 L)
Total Capacity	552 gal (2089 L)
Airspace	16.2%
Length	64.9" (1648 mm)
Width	61.7" (1567 mm)
Height	54.6" (1387 mm)
Liquid Level	44" (1118 mm)
Compartments	1
Maximum Burial Depth	48" (1219 mm)
Minimum Burial Depth	6" (152 mm)
Maximum Pipe Diameter	4" (100 mm)
Weight	169 lbs (77 kg)

Contact Infiltrator's Technical Services Department for assistance at 1-800-221-4436 or info@infiltratorwater.com