

# IM-Potable Water Tanks

IM-550C • IM-1280C • IM-1760C

The Infiltrator IM-Series Potable water tanks are lightweight, strong and durable. These potable, watertight designed tanks are offered with Infiltrator's potable heavy-duty lids. Infiltrator injection-molded tanks provide a revolutionary improvement in plastic tank design, offering long-term exceptional strength and watertightness. Infiltrator's IM-Series Potable water tanks are available in 552-gallon, 1287-gallon and 1787-gallon capacities.



## Benefits



Strong injection-molded polypropylene construction



NSF/ANSI-61-certified for potable uses



Lightweight plastic construction and inboard lifting lugs allow for easy delivery and handling



Integral heavy-duty green lids that interconnect with EZsnap risers and pipe riser solutions



Structurally reinforced access ports eliminate distortion during installation and pump-outs



Reinforced structural ribbing and fiberglass bulkheads offer additional strength

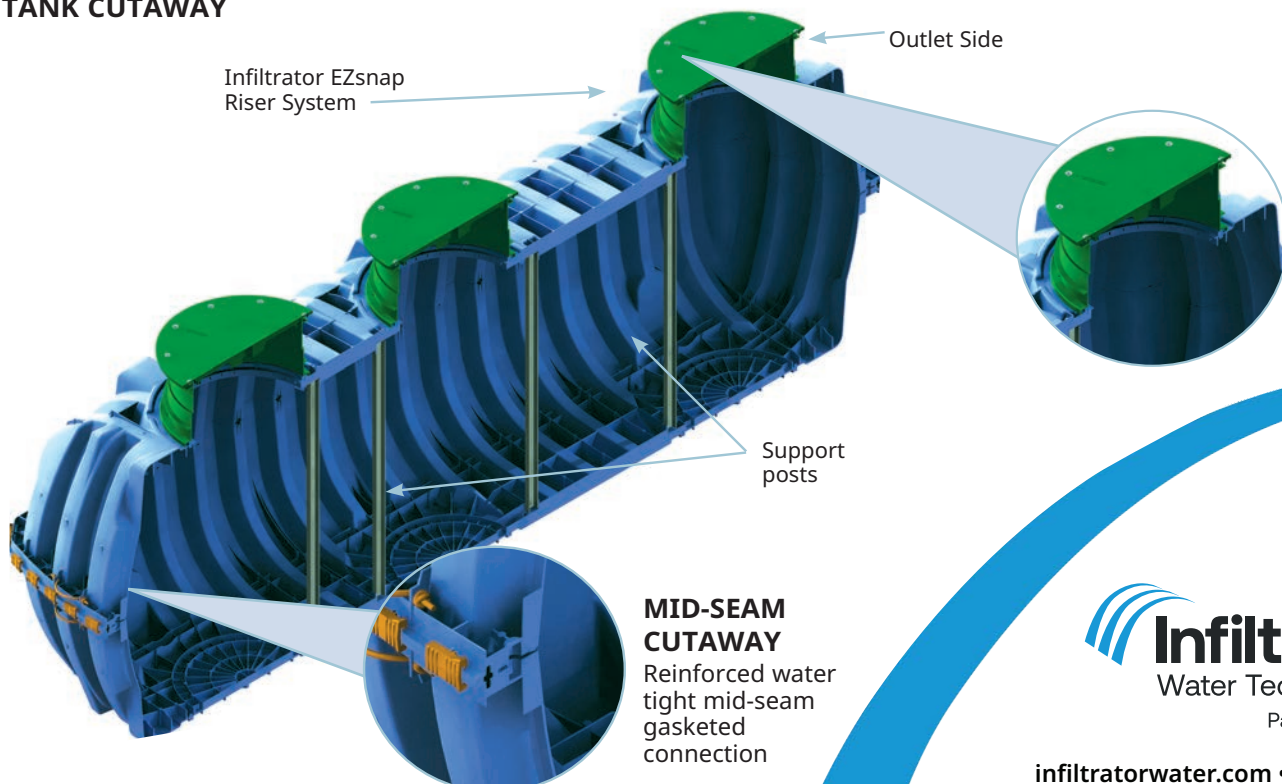


Can be installed with 6" to 48" of cover



Suitable for use as a potable pump tank, rainwater harvesting tank or water storage tank

## TANK CUTAWAY



**Infiltrator**  
Water Technologies  
Part of **ADS**

[infiltratorwater.com](http://infiltratorwater.com) • (800) 221-4436

# IM-Series Potable Water Tanks General Specifications and Illustrations

The IM-Series Potable water tanks are injection-molded, two piece, mid-seam plastic tanks. The injection-molded plastic design allows for a mid-seam joint that has precise dimensions for accepting an engineered EPDM gasket. Infiltrator's gasket design utilizes technology from the water industry to deliver proven means of maintaining a watertight seal. The two-piece design is permanently fastened using a series of non-corrosive plastic alignment dowels and locking seam clips. The IM-Series Potable water tanks are assembled and sold through a network of certified Infiltrator distributors and are NSF/ASNI-61- certified for potable uses.



SCAN ME

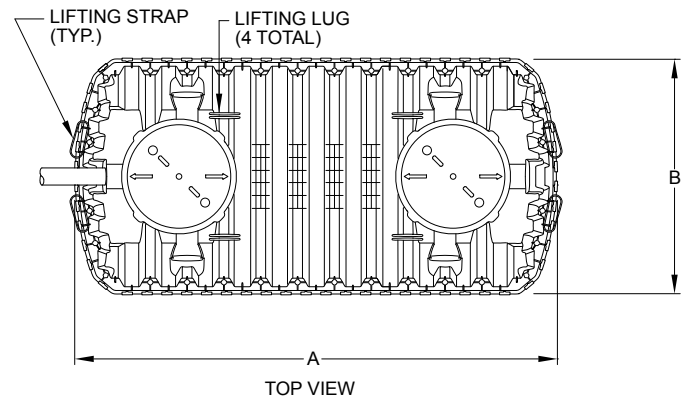
**Must be backfilled and installed in accordance with the Infiltrator IM- and CM-Series Septic Tank General**

**Installation Instructions. For shallow ground water conditions reference the Infiltrator IM- and CM-Series Tank Buoyancy Control Guidance.**

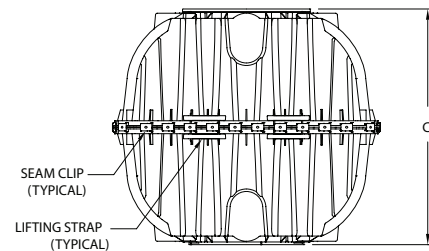
Please visit [www.infiltratorwater.com](http://www.infiltratorwater.com) or scan QR code for the latest information.

## IM-Potable Water Tank Series

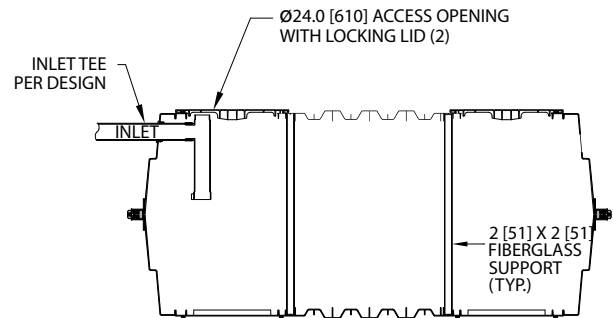
Parameter	IM-550C	IM-1280C	IM-1760C
Total Capacity	552 gal (2089 L)	1287 gal (4872 L)	1787 gal (6765 L)
Length (A)	65 (1651 mm)	127" (3226 mm)	176" (4460 mm)
Width (B)	62 (1575 mm)	62 (1575 mm)	62 (1575 mm)
Height (C)	55 (1397 mm)	55 (1397 mm)	55 (1397 mm)
Fiberglass Supports	0	2	4
Maximum Burial Depth	48" (1219 mm)	48" (1219 mm)	48" (1219 mm)
Minimum Burial Depth	6" (152 mm)	6" (152 mm)	6" (152 mm)
Maximum Pipe Diameter	4" (100 mm)	6" (152 mm)	4" (100 mm)
Weight	191 (87 kg)	346 (157 kg)	501 (227 kg)



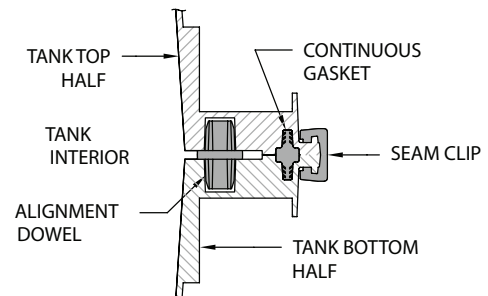
TOP VIEW



SIDE VIEW



END VIEW



MID-HEIGHT SEAM SECTION

Contact Infiltrator's Technical Services Department for assistance at 1-800-221-4436 or [info@infiltratorwater.com](mailto:info@infiltratorwater.com)