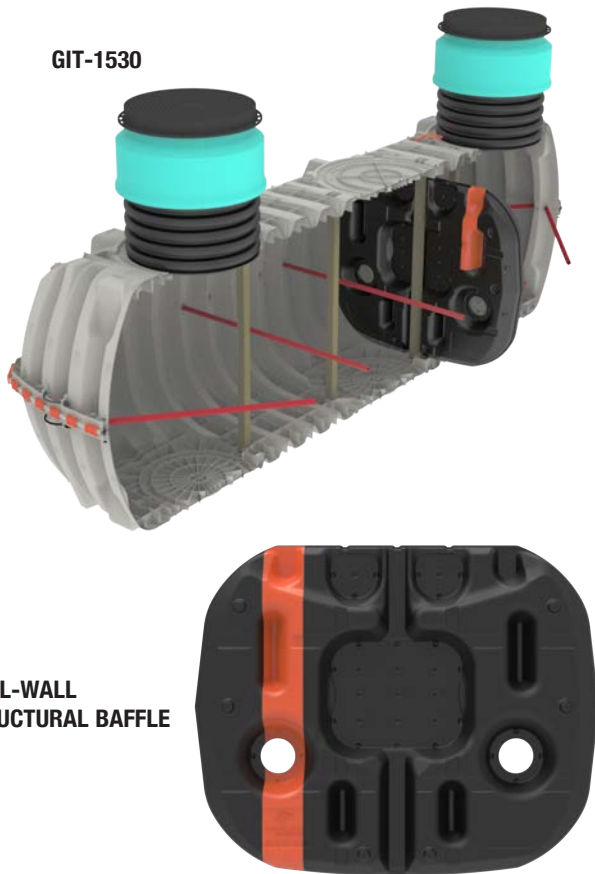


GREASE INTERCEPTORS

GIT-1530

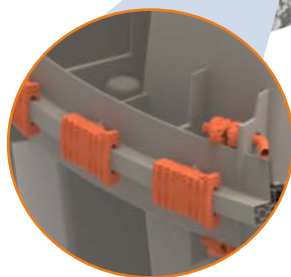
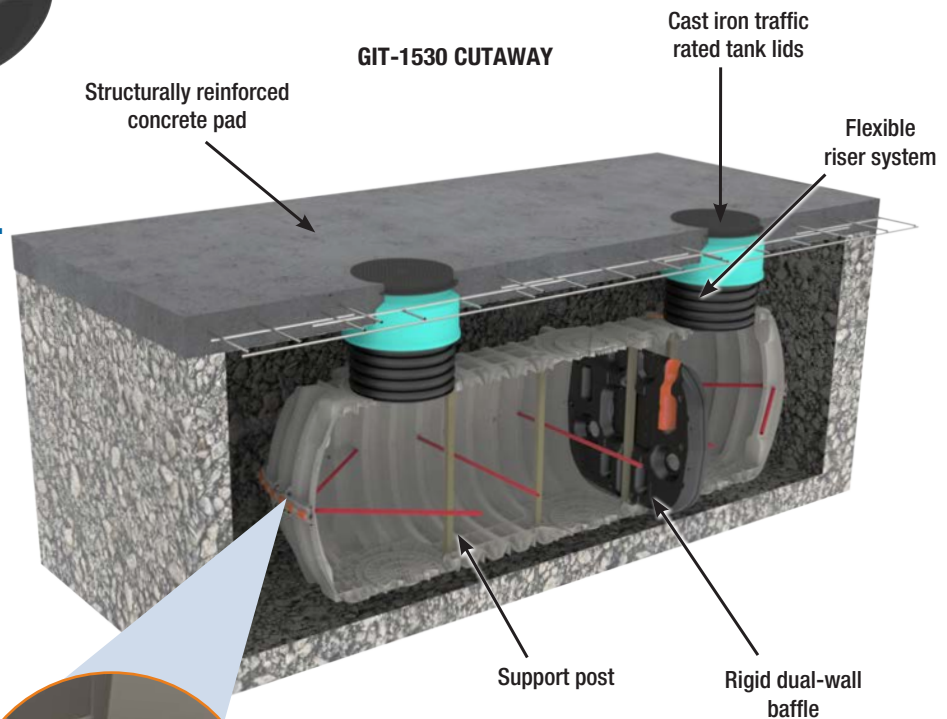


Features & Benefits

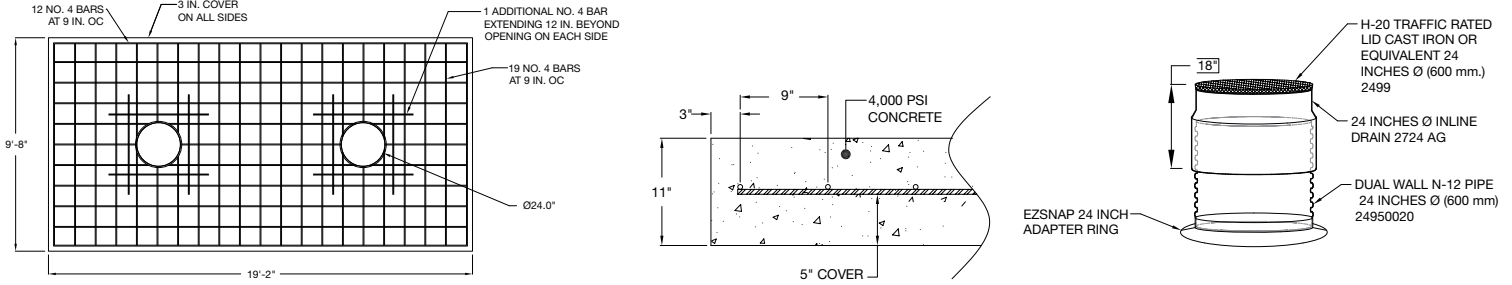
- Low profile tank design using structural corrugations and fiberglass supports optimal for below grade installation
- Delivery and handling made quick and easy by the lightweight thermoplastic design
- A continuous gasket mid-seam connection is secured by 86 permanent seam clips which produces a watertight bond between tank halves
- Maximum 48" burial depth with 24" access manholes available
- Dual-wall structural baffle creates a two-chamber tank that prevents solids and grease from short-circuiting across the interceptor
- Traffic Rated AASHTO H20 design incorporates a reinforced concrete pad
- Access manhole design includes H-20 traffic rated 24" cast iron covers, Nyloplast Inline Drains, dual wall corrugated pipe or corrugated PVC pipe and SNAPPAR adapter rings

Trap and separate grease, preventing it from clogging wastewater infrastructure.

Infiltrator's GIT-1530 is the industry's first injection molded gravity grease interceptor. This design produces an easily installed and highly durable below grade interceptor solution. Non-corrosive polypropylene impregnated with fiberglass improves its durability beyond Infiltrator's standard septic tank product line. A dual-wall structural baffle creates a two-chamber solution that prevents solids and FOG from short-circuiting across the interceptor. In compliance with AASHTO H20, the tank is also designed to be installed beneath a traffic rated concrete slab with 24" cast iron covers, Nyloplast inline drains, ADS N-12 Dual Wall Pipe (sold separately), and pipe adapter rings.



GIT General Specifications and Illustrations

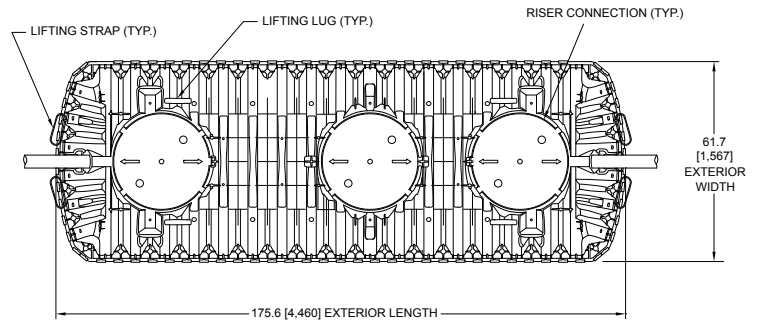


AASHTO H20 LOADING REQUIREMENTS

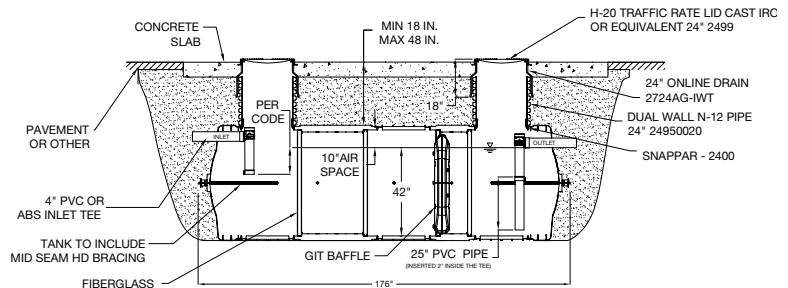
Must be backfilled and installed in accordance with the Infiltrator Infiltrator GIT Interceptor General Installation Instructions.

For shallow ground water conditions reference the Infiltrator IM- and CM-Series Tank Buoyancy Control Guidance.

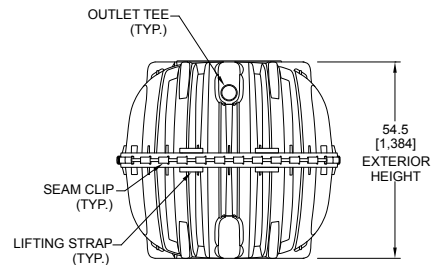
GIT-1530	
Working Capacity	1537 gal (5818 L)
Total Capacity	1787 gal (6765 L)
Airspace	16.9%
Length	176" (4460 mm)
Width	62" (1567 mm)
Length-to-Width Ratio	2.8 to 1
Height	55" (1384 mm)
Liquid Level	44" (1118 mm)
Invert Drop	3" (76 mm)
Fiberglass Supports	4
Compartments	2
Maximum Burial Depth	48" (1219 mm)
Minimum Burial Depth	18" (457 mm)
Maximum Pipe Diameter	4" (100 mm)
Weight	570 lbs (256 kg)



TOP VIEW



SIDE VIEW



END VIEW



4 Business Park Road
 P.O. Box 768
 Old Saybrook, CT 06475
 860-577-7000 • Fax 860-577-7001
 1-800-221-4436
www.infiltratorwater.com
info@infiltratorwater.com

For U.S. patents information visit www.infiltratorwater.com/patents. Other patents pending. Infiltrator, Quick4 and EZflow are registered trademarks of Infiltrator Water Technologies. Infiltrator Water Technologies is a wholly-owned subsidiary of Advanced Drainage Systems, Inc. (ADS).