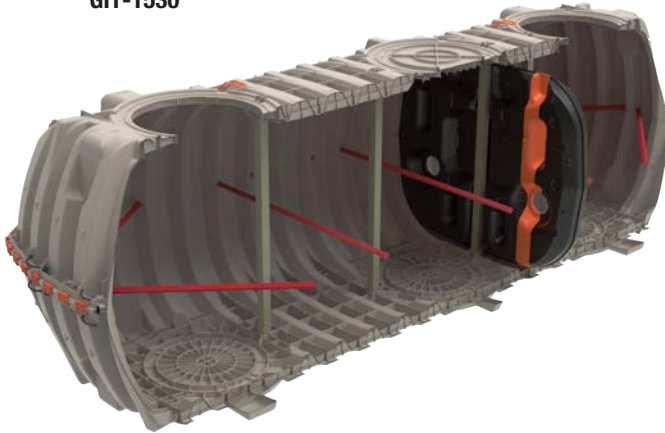


GREASE INTERCEPTORS

GIT-1530

GIT-1530



DUAL-WALL
BAFFLE



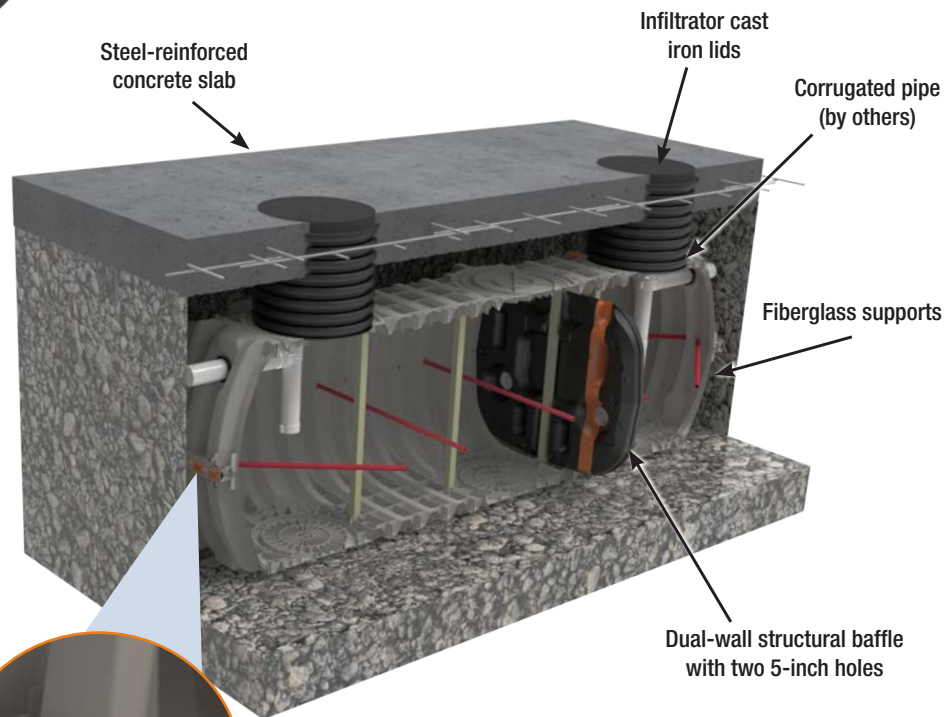
Features & Benefits

- Structural corrugations and fiberglass supports enable a low profile design ideal for below grade installations
- Molded with fiberglass-filled polypropylene that increases durability and corrosion resistance
- Lightweight thermoplastic design allows for quick and easy job site delivery and installation
- A continuous-loop gasketed mid-seam connection is secured by permanent clips producing a watertight seal between interceptor halves
- Burial depths can range between 6-inches and 48-inches depending on the installation type
- Dual-wall baffle creates a two-compartment interceptor that prevents fats, oils, and grease (FOG) from short-circuiting across the interceptor
- Traffic-rated AASHTO H-20 design requires steel-reinforced concrete slab
- Traffic rated risers can be achieved with cast iron lids, dual wall corrugated pipe and Infiltrator's pipe adapter ring. Non-traffic rated installations may use Infiltrator's EZnsap risers

Traps and separates FOG, preventing it from clogging wastewater infrastructure

Infiltrator's GIT-1530 is the industry's first injection molded gravity grease interceptor. The design allows for a simplified installation of a highly durable below grade interceptor solution. A fiberglass infused body improves durability beyond standard thermoplastic tanks. A dual-wall baffle creates a two-compartment solution that prevents solids and FOG from short-circuiting across the interceptor. AASHTO H20 traffic rated installations possible with the use of a steel-reinforced concrete slab. See the next page for details.

GIT-1530 TRAFFIC INSTALLATION

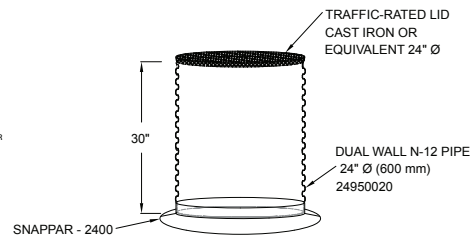
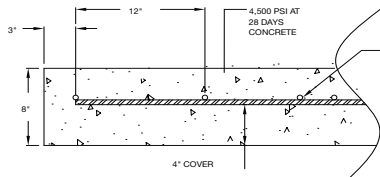
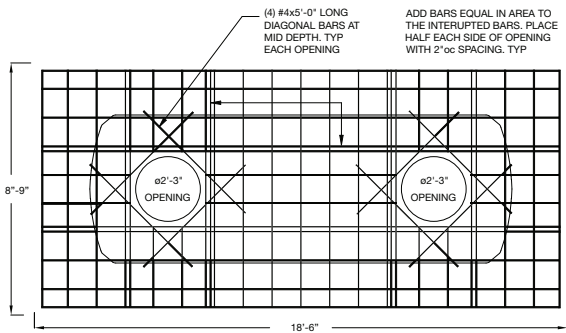


MID-SEAM CUTAWAY
Reinforced watertight
mid-seam gasketed
connection



INFILTRATOR
water technologies

General Specifications and Illustrations



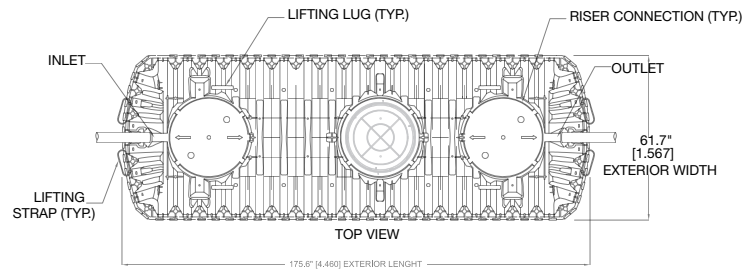
AASHTO H-20 TRAFFIC LOADING DESIGN REQUIREMENTS

Must be installed and backfilled in accordance with the Infiltrator Grease Interceptor General Installation Instructions

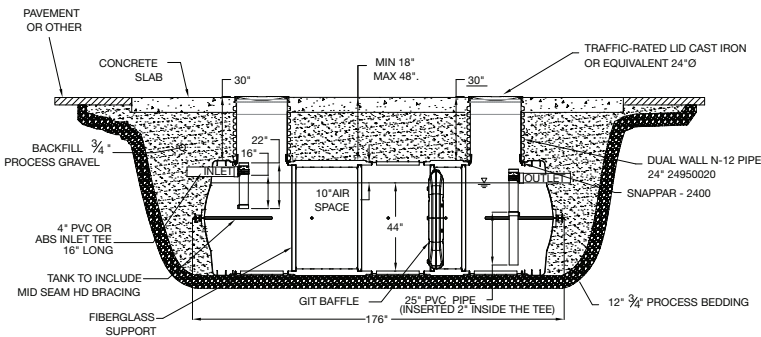
For shallow ground water conditions where buoyancy control is necessary reference the Infiltrator IM- and CM-Series Tank Buoyancy Control Guidance

| GIT-1530 | |
|----------------------------------|----------------------|
| Total Liquid Capacity | 1,787 gal (6,765 L) |
| Working Liquid Capacity | 1,537 gal (5,818 L) |
| FOG Capacity | 192 gal (1,400 lbs)* |
| Airspace | 16.9% |
| Length | 176" (4460 mm) |
| Width | 62" (1567 mm) |
| Height | 55" (1384 mm) |
| Liquid Level | 44" (1118 mm) |
| Invert Drop | 3" (76 mm) |
| Fiberglass Supports | 11 |
| Compartments | 2 |
| Maximum Traffic Burial Depth | 48" (1219 mm) |
| Minimum Traffic Burial Depth | 18" (457 mm) |
| Minimum Non-Traffic Burial Depth | 6" (152 mm) |
| Maximum Pipe Diameter | 4" (100 mm) |
| Weight | 570 lbs (256 kg) |

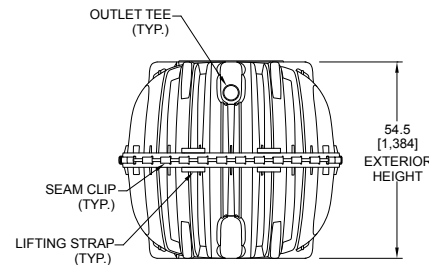
*Calculation based on 25% rule of Working Capacity



TOP VIEW



SIDE VIEW



END VIEW



INFILTRATOR
water technologies

4 Business Park Road
P.O. Box 768
Old Saybrook, CT 06475
(860) 577-7000 • Fax (860) 577-7001
(800) 221-4436
www.infiltratorwater.com
info@infiltratorwater.com

For U.S. patents information visit www.infiltratorwater.com/patents. Other patents pending. Infiltrator, Quick4 and EZflow are registered trademarks of Infiltrator Water Technologies. Infiltrator Water Technologies is a wholly-owned subsidiary of Advanced Drainage Systems, Inc. (ADS).

© 2025 Infiltrator Water Technologies, LLC. Not responsible for any typographic errors. Printed in U.S.A.

GIT02 0125

Contact Infiltrator Water Technologies' Technical Services Department at (800) 221-4436 or info@infiltratorwater.com