




Infiltrator Water Technologies and Rainwater Management Solutions combine product offerings and services to deliver a comprehensive, environmentally-conscious rainwater harvesting

solution for residential potable and non-potable use. This system consists of five primary elements: pre-tank filtration, a smoothing inlet, tank storage, a floating intake and water pump, and overflow management. The 2,100 Below-Ground Package (BP) Kit handles roof catchment areas of up to 2,100 square feet. Larger rooftop areas require either the 5,500 BP Kit, which can handle rooftop areas less than 5,500 square feet, or a multi-filter system.



1

Vortex Filtration – A self-cleaning filtration device circulates water through its internal housing until reaching a stainless-steel sieve basket capable of filtering water up to 280 microns before passing debris-free rainwater to the tank. Leaves, pebbles, and other forms of debris simply fall through the bottom of the housing and are discharged to daylight elsewhere on the homeowner's property.

Inlet Smoothing – A stainless-steel smoothing inlet eases incoming flows to prevent accumulated sediment inside of the tank from becoming suspended. Installed with a 90-degree elbow, the smoothing inlet is connected to either 4" SDR 35 or S&D pipe. Gluing the device to the pipe is not required as it will be held in between the floor of the tank and pipe.



Tank Storage – Low profile, injection-molded polypropylene tanks are watertight and easy to install. Reinforced structural ribbing and fiberglass support posts provide exceptional strength and durability when installed correctly. Potable and non-potable tank options are available.

Floating Intake & Water Pump - A floating ball suspends the stainless-steel mesh filter just below the surface positioning it in the optimal location: the clarified zone that exists between floating particulates near the surface and settled sediments at the bottom of the tank. The Grundfos Submersible pump delivers harvested rainwater to its end use. Neither parts are included in either kit, but are essential elements of a rainwater harvesting system.

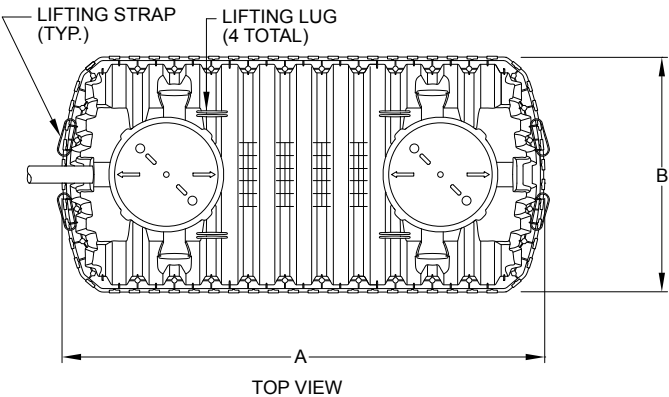


Overflow Management – The Multi-Siphon Overflow Device siphons particulate-laden surface water through the overflow device and out of the storage vessel. It also prevents storm drain odors and rodents from reaching the inside of the tank.

Additional accessories and components such as a gooseneck air vent, pump, filtration units, bulkhead fittings, and more are available to complete the system but not included in the either kit.

Sizing A Rainwater Harvesting System

Identifying a household’s total water demand and harvesting potential are essential while sizing a rainwater harvesting system. Circumstances vary case-by-case: an under performing water well might necessitate a homeowner supplement their total water demand, while a health-conscious homeowner may only require enough rainwater to irrigate a small garden. Geographic precipitation amounts are another crucial, and tremendously variable, input while sizing a system. The advantage of abundant rainfall, however, can only be fully utilized if the system is supported by a large rooftop area - the larger the roof, the more rainwater that can be harvested. Visit Infiltrator’s website or contact our technical team for assistance while developing a system that will meet your needs.



Install the tank in accordance with Infiltrator Water Technologies’ Infiltrator IM-Series Septic Tank General Installation Instructions and for shallow ground water conditions please reference the infiltrator IM Series Tank Buoyancy Control Guidance.

Infiltrator septic tanks are available for non-potable use cases. Visit www.infiltratorwater.com for more information.

IM-Potable Water Tank Series				IM-Septic Tank Series (Non-Potable Water)				
Parameter	IM-550C	IM-1280C	IM-1760C	IM-300	IM-540	CM-1060	IM-1250	IM-1530
Total Capacity	552 gal (2,089 L)	1,287 gal (4,872 L)	1,787 gal (6,765 L)	1,309 gal (4,956 L)	552 gal (2,089 L)	1,309 gal (4,956 L)	1,480 gal (5,604 L)	1,787 gal (6,765 L)
Length (A)	65" (1,651 mm)	127" (3,226 mm)	176" (4,460 mm)	134.2" (3,409 mm)	134.2" (3,409 mm)	134.2" (3,409 mm)	154" (3,911 mm)	176" (4,460 mm)
Width (B)	62" (1,575 mm)	62" (1,575 mm)	62" (1,575 mm)	61.7" (1,567 mm)	61.7" (1,567 mm)	61.7" (1,567 mm)	61.7" (1,567 mm)	62" (1,567 mm)
Height	55" (1,397 mm)	55 (1,397 mm)	55" (1,397 mm)	54.5" (1,384 mm)	54.6" (1,387 mm)	54.5" (1,384 mm)	54.6" (1,387 mm)	55" (1,384 mm)
Fiberglass Supports	0	2	4	0	0	2	4	4
Maximum Burial Depth	48" (1,219 mm)	48" (1,219 mm)	48" (1,219 mm)	48" (1,219 mm)	48" (1,219 mm)	48" (1,219 mm)	48" (1,219 mm)	48" (1,219 mm)
Minimum Burial Depth	6" (152 mm)	6" (152 mm)	6" (152 mm)	6" (152 mm)	6" (152 mm)	6" (152 mm)	6" (152 mm)	6" (152 mm)
Maximum Pipe Diameter	4" (102 mm)	6" (152 mm)	4" (102 mm)	4" (102 mm)	4" (102 mm)	4" (102 mm)	4" (102 mm)	4" (102 mm)
Weight (lbs)	187 (85 kg)	355 (161 kg)	486 (220 kg)	140 lbs (64 kg)	204 lbs (93 kg)	354 lbs (161 kg)	400 lbs (181 kg)	518 lbs (235 kg)



INFILTRATOR
water technologies

4 Business Park Road
P.O. Box 768
Old Saybrook, CT 06475
860-577-7000 • Fax 860-577-7001
1-800-221-4436
www.infiltratorwater.com
info@infiltratorwater.com